

# Rip Porphyry Copper-Molybdenum Project



*April 2025*

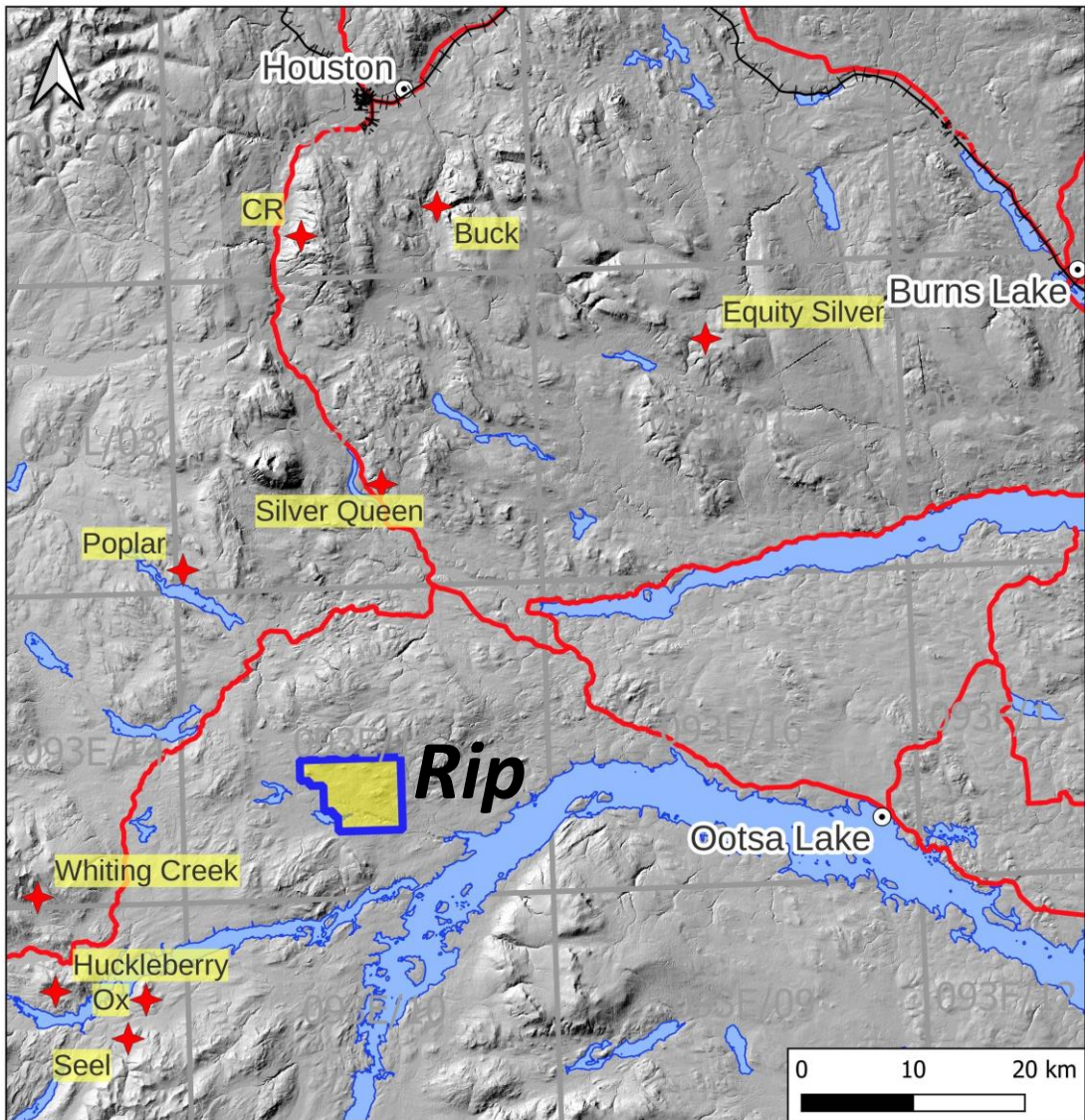
*Low relief till-covered target area, Rip Porphyry Cu-Mo Project, central B.C.*

# Cautionary and Forward-Looking Statement Information

This presentation includes certain statements that may be deemed "forward-looking statements". All such statements, other than statements of historical facts that address exploration drilling, exploitation activities and other related events or developments are forward-looking statements. Although ArcWest Exploration Inc. ("ArcWest") believes the expectations expressed in such forward-looking statements are based on reasonable assumptions, such statements are not guarantees of future performance and actual results or developments may differ materially from those in the forward-looking statements. Assumptions used by ArcWest to develop forward-looking statements include the following: ArcWest's projects will obtain all required environmental and other permits and all land use and other licenses, studies and exploration of ArcWest's projects will continue to be positive and no geological or technical problems will occur. Factors that could cause actual results to differ materially from those in forward-looking statements include market prices, potential environmental issues or liabilities associated with exploration, development and mining activities, exploitation and exploration successes, continuity of mineralization, uncertainties related to the ability to obtain necessary permits, licenses and tenure and delays due to third party opposition, changes in and the effect of government policies regarding mining and natural resource exploration and exploitation, the exploration and development of properties located within Aboriginal groups asserted territories may affect or be perceived to affect asserted aboriginal rights and title, which may cause permitting delays or opposition by Aboriginal groups, continued availability of capital and financing and general economic, market or business conditions. Investors are cautioned that any such statements are not guarantees of future performance and actual results or developments may differ materially from those projected in the forward-looking statements. For more information on ArcWest, investors should review the Company's filings that are available at [www.sedar.com](http://www.sedar.com).

Technical information contained in this presentation has been reviewed and approved by John Bradford, P.Geo., a Qualified Person who is not independent of ArcWest.

# Rip Porphyry Copper-Molybdenum Project



*Location, access and major mines and deposits near Rip*

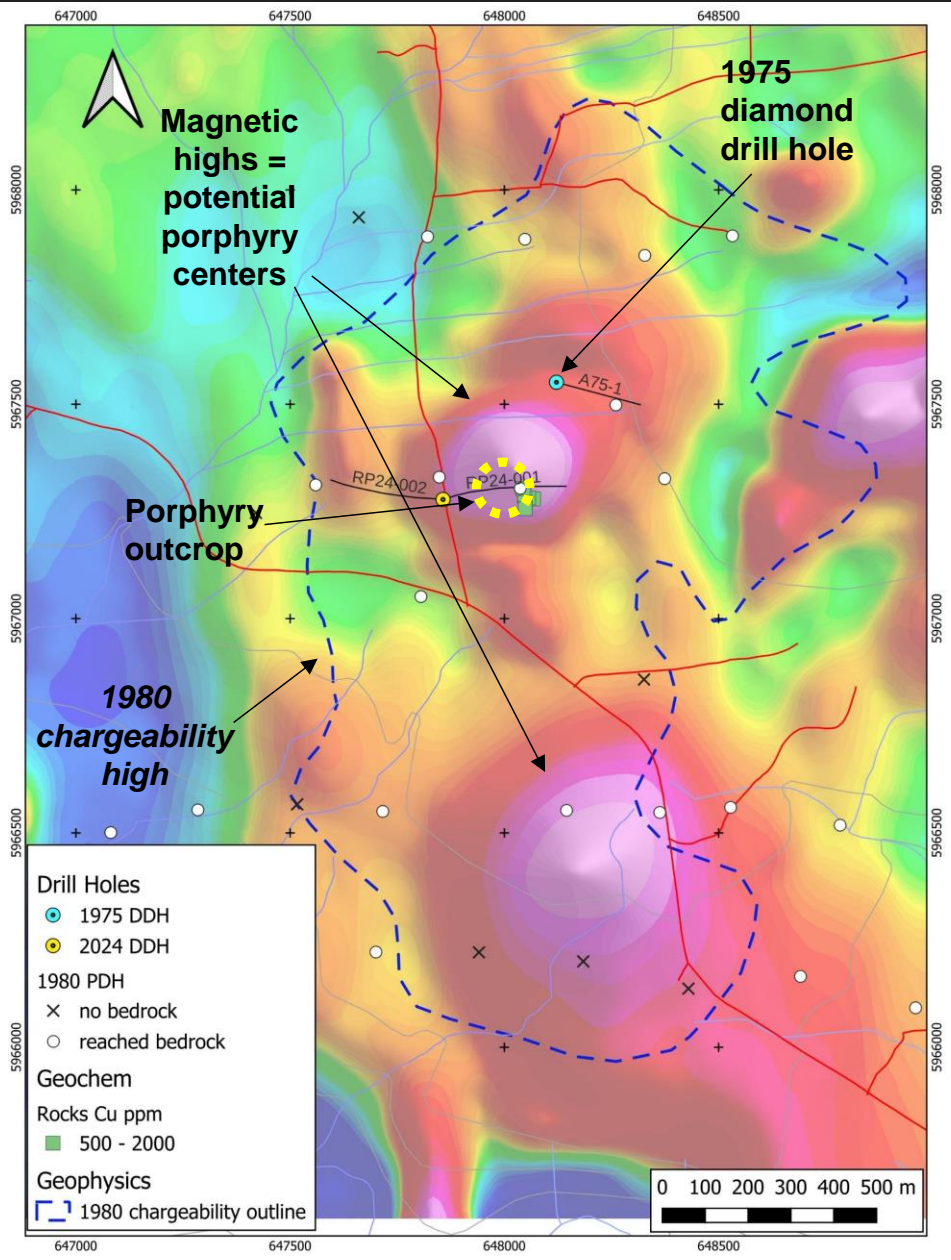
ArcWest's Rip Project is large (4770 ha) and easily accessible on major logging roads just 60 km south of Houston on B.C. Highway 16.

In an emerging mineral belt close to past producing mines such as Equity Silver (Newmont) and Huckleberry (Imperial Metals) and major new developments including Artemis Gold's Blackwater Gold Mine.

Located in low relief terrain with year round access and low-cost exploration.



# Rip Cu-Mo Porphyry Project: Two Adjacent Porphyry Systems (1)



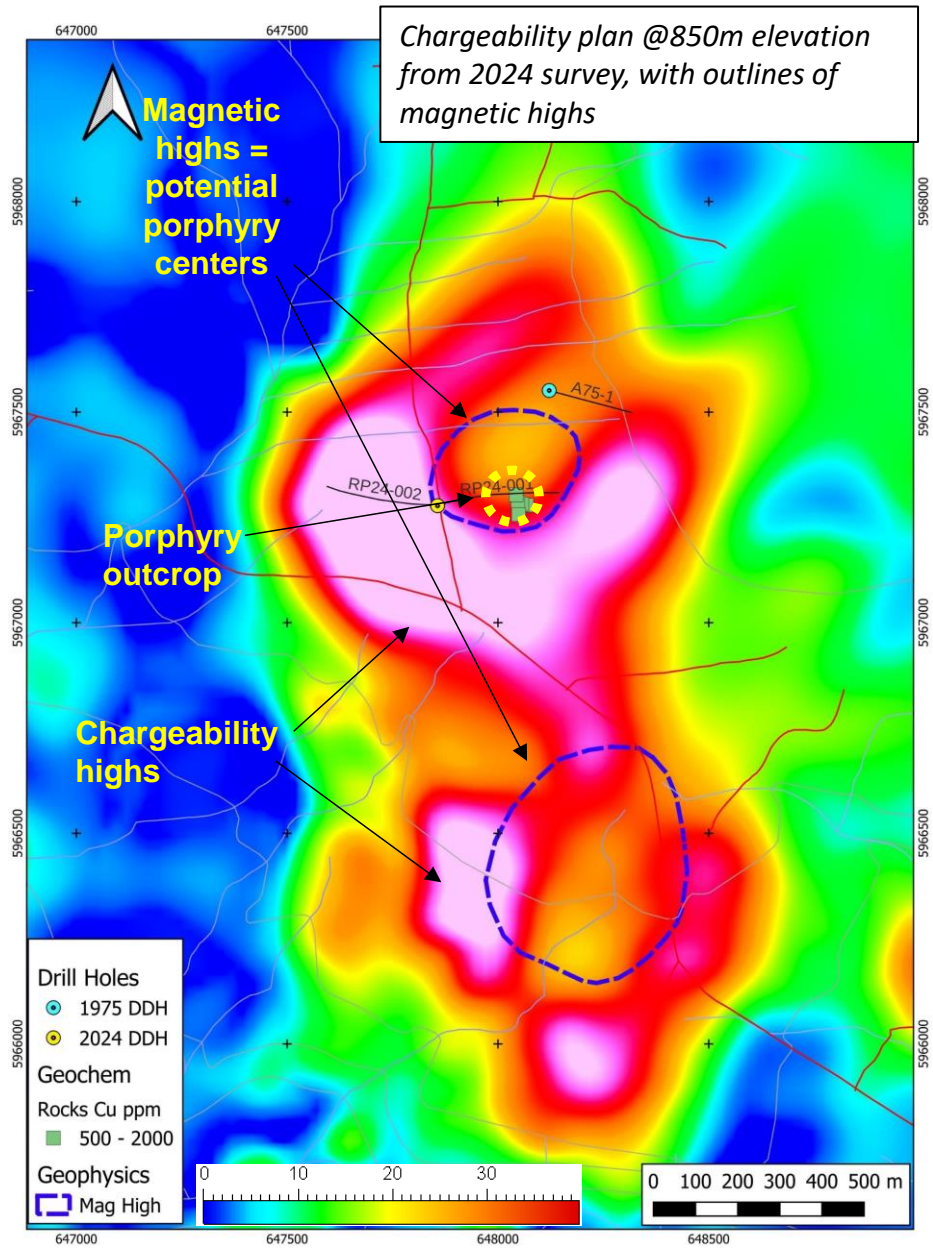
The Rip Project was initially explored by Kennco (1975-1981), who defined a large chargeability anomaly in a mostly till covered area. Shallow percussion drill holes (PDH) defined a broad zone of QSP alteration. A single 1975 diamond drill hole (DDH) intersected anomalous Cu and Mo in QSP altered volcanics, feldspar porphyry and diorite as well as a strongly altered polymictic breccia.

A small central outcrop area surrounded by till cover contains multi-stage porphyry-style stockwork veining.

**An airborne magnetic survey flown in 2024 revealed for the first time two separate circular magnetic highs within the historical chargeability high, suggesting that Rip contains two porphyry centers.** The southern mag high is significantly larger than the northern one but does not crop out.

*2024 airborne magnetics (RTP), mineralized outcrop and historical chargeability high*

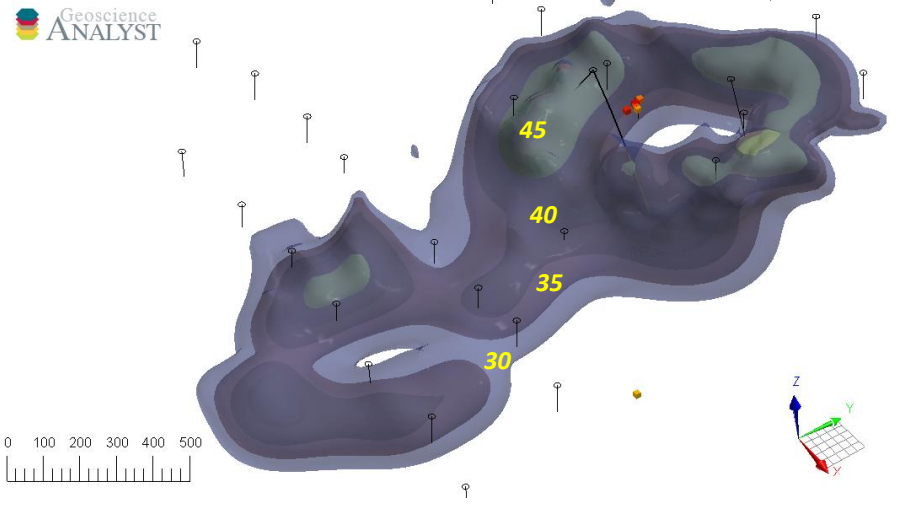
# Rip Cu-Mo Porphyry Project: Two Adjacent Porphyry Systems (2)



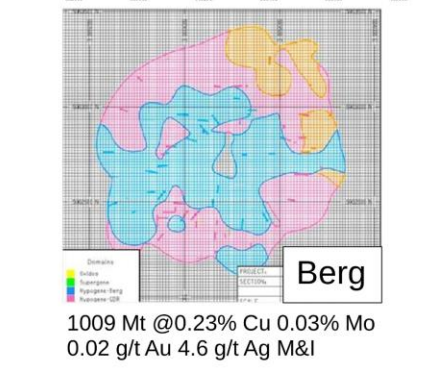
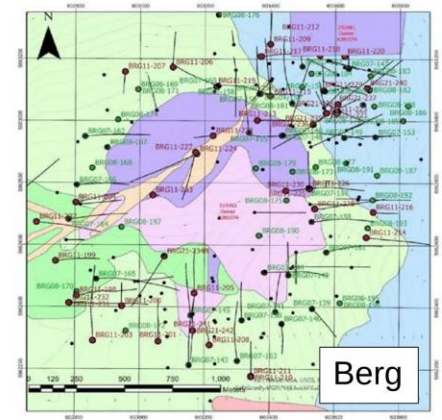
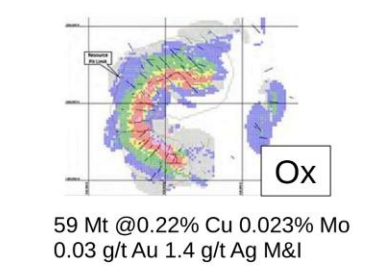
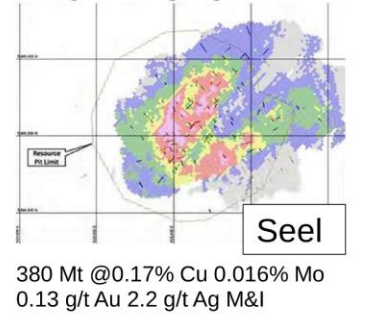
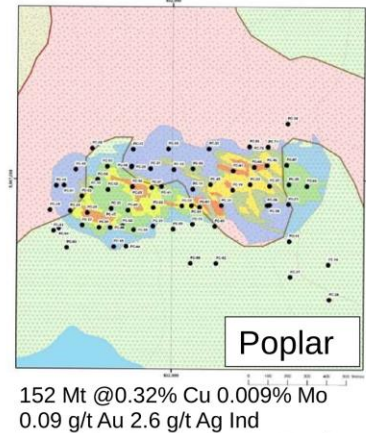
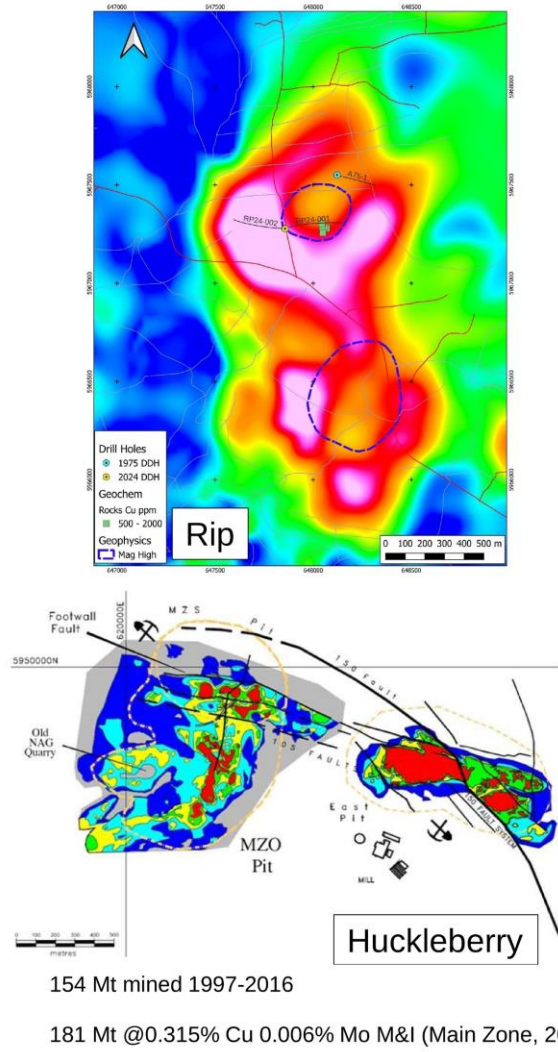
Following the airborne mag survey, a 3D-DCIP induced polarization and resistivity survey was completed over the Rip target in 2024.

The new IP survey resolved the original 1980 chargeability anomaly into two chargeability “donuts” around the two separate magnetic highs, the classic “pyrite halo” signatures of porphyry systems. **This provides convincing evidence for the interpretation that Rip contained two adjacent porphyry systems.**

*3D view looking NW and down at >30 mV/V chargeability highs showing drill hole traces*



# Rip Cu-Mo Porphyry Project: Comparative Footprint



Comparative Footprints of Late K/Eoc Porphyries

The size of the Rip anomaly compares well with other well-drilled porphyry deposits in the district. All of these deposits have been tested by numerous drill holes and have significant Cu-Mo (Au-Ag) resources. All maps are at the same scale.

# Rip Cu-Mo Porphyry Project: Stockwork Zone



*Volcanics cut by multistage magnetite and quartz-sulfide stockwork*



*Intense stockwork to sheeted quartz-sulfide veining in trench*

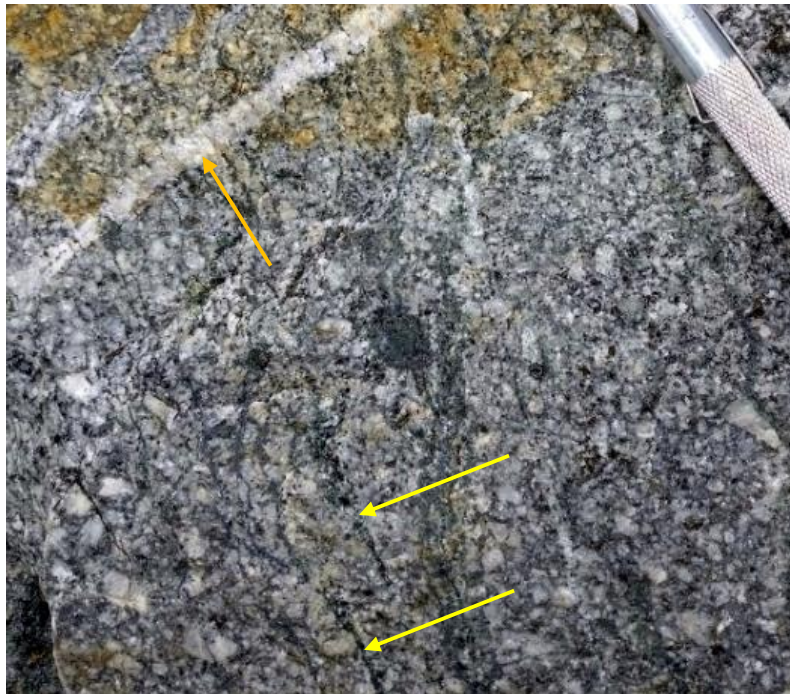


*Hornfels with patchy/vein biotite-magnetite-sulfides*

# Rip Cu-Mo Porphyry Project: Intrusive Rocks



*Altered porphyry with quartz-sulfide veins*

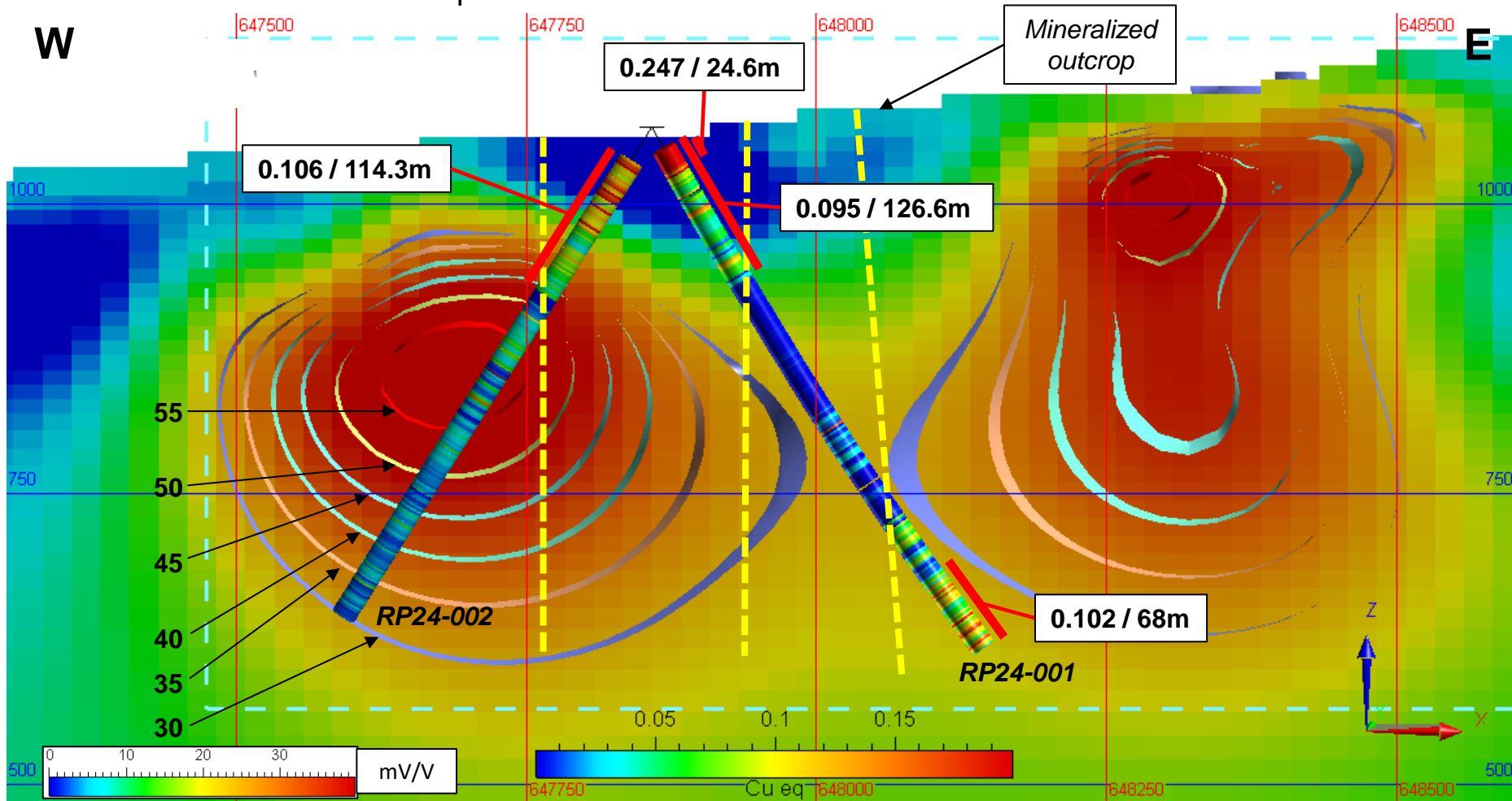


*18TRRP003 feldspar-quartz porphyry cut by magnetite-chalcopyrite and quartz-pyrite-chalcopyrite-moly veins*

*18TRRP001 feldspar-quartz porphyry intrusive cut by magnetite-chalcopyrite (yellow arrows) and quartz-pyrite-chalcopyrite-moly veins (orange arrow)*

# Rip Cu-Mo Porphyry Project: 2024 Drilling

In 2024, two drill holes were completed on the north porphyry target from a single setup, intersecting low-grade Cu-Mo±Au±Ag porphyry mineralization on the inner half of the chargeability torus both at surface in both holes and at depths >400m in RP24-001.

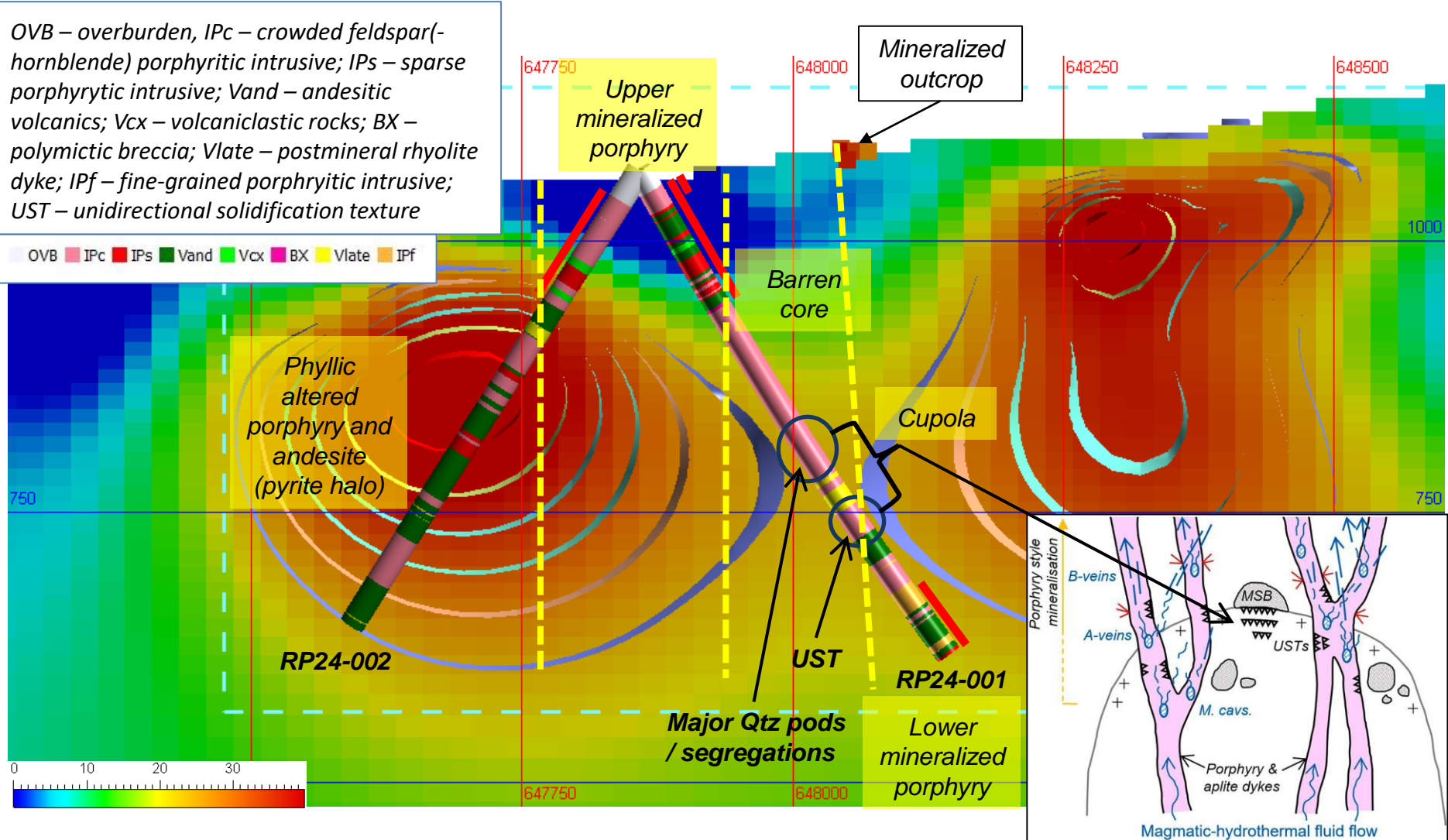


Section through RP24-001 and RP24-002 with chargeability shells (30-55 mV/V), CuEq values, and sections with CuEq > 0.10% and 0.20%.

Copper equivalent (CuEq) calculation described on page 12.

# Rip Cu-Mo Porphyry Project: 2024 Drilling

Between the upper and lower mineralized zones, drill hole RP24-001 intersected a zone of major quartz pods and segregations (284-334m) and UST (369-374m) cut by a late rhyolite (aplite?) dyke, which likely represents a magmatic cupola near the magmatic-hydrothermal transition



# Rip Cu-Mo Porphyry Project: 2024 Drill Results

DH		From m	To m	Interval m	Au g/t	Ag ppm	Cu ppm	Mo ppm	CuEq %
RP24-001		21.4	148	126.6	0.026	0.5	514	43.2	0.095
RP24-001	incl	21.4	94	72.6	0.035	0.7	659	63.4	0.127
RP24-001	incl	21.4	46	24.6	0.074	1.6	1285	109.0	0.247
RP24-001	and	464	532	68	0.018	0.5	665	38.1	0.102
RP24-001	incl	500	516	16	0.022	0.6	886	36.8	0.114
RP24-002		33.6	147.9	114.3	0.023	0.5	615	49.8	0.106
RP24-002	incl	33.6	106	72.4	0.029	0.6	724	63.9	0.129

Average of assays from selected intervals with values continuously >500ppm copper equivalence (CuEq), with allowance for inclusion of single sample gaps <500ppm CuEq. These intervals are mostly not considered to be ore grade, but rather are included to illustrate the extent of the mineralizing system. Cu equivalents are calculated based on the following US\$ price assumptions: copper, US\$4 per pound; gold, US\$2,500 per troy ounce; silver, US\$30 per troy ounce; and molybdenum, US\$20/kg. Recovery factors used: Cu 91.2%; Mo 85.8%; Au 73.1%; Ag 70.1%; these are averages from metallurgical tests on five porphyry deposits which represent regional analogues (Huckleberry, Poplar, Seel, Ox and Berg).

# Rip Cu-Mo Porphyry Project: RP24-001

## Upper Zone

## Cupola

## Lower Zone



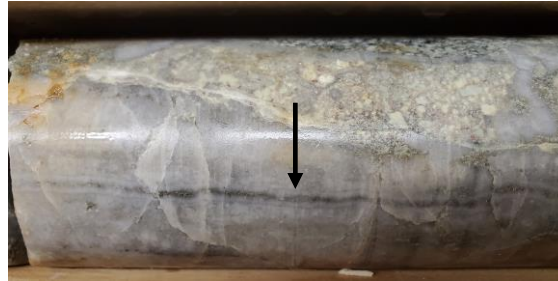
26.9m Crowded porphyry, qtz-cp-mo veins 0.23% Cu  
0.19 g/t Au, 95 ppm Mo, 2.7 g/t Ag (0.43% CuEq)



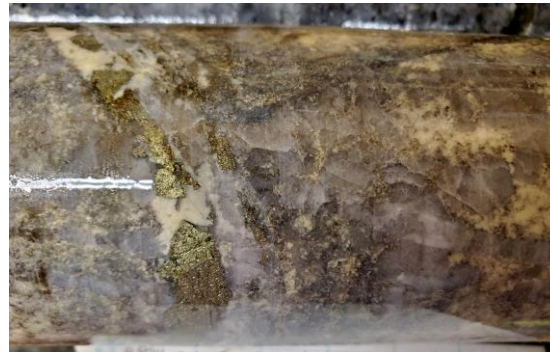
36.3m Crowded porphyry, qtz-cp-mo vein cutting  
chl(bt)-mt vein 0.13% Cu 0.06 g/t Au, 90 ppm Mo,  
1.5 g/t Ag (0.23% CuEq)



45.4m  
Andesite,  
qtz-cp-mo  
veinlets.  
0.055% Cu,  
514 ppm Mo  
(0.31%  
CuEq)



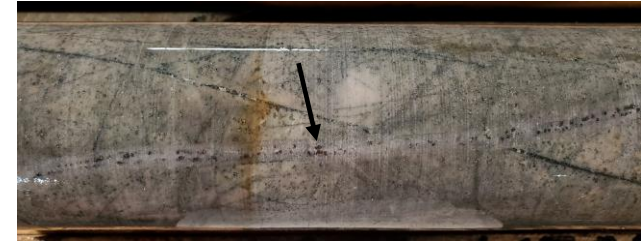
294.5m Large qtz segregation engulfing B vein  
with sulfide centerline (arrow)



302.3m Qtz-cb-py-cp vein 0.05% Cu 0.11 g/t  
Au, 0.8 g/t Ag (0.14% CuEq)



372.5m UST (magmatic-hydrothermal transition  
texture)



465.4m Fine-grained porphyry, qtz-mt vein (arrow)  
cutting early mt stockwork 0.09% Cu, 34 ppm Mo  
(0.13% CuEq)

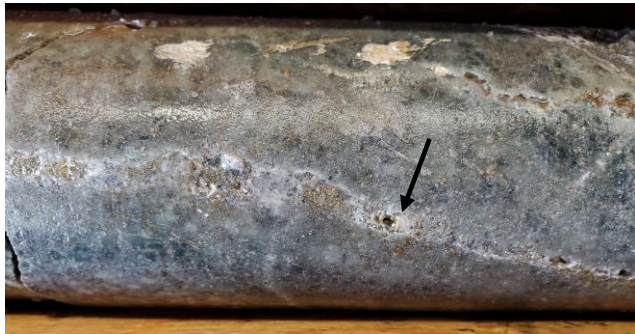


473.3m Fine-grained porphyry/breccia, qtz-mt veins, patchy  
albite/K-feldspar 0.10% Cu, 73 ppm Mo (0.16% CuEq)



503.4m Strongly hornfelsed andesite, mt-py-cp veins  
0.14% Cu 0.04 g/t Au, 76 ppm Mo, 1.0 g/t Ag (0.21%  
CuEq)

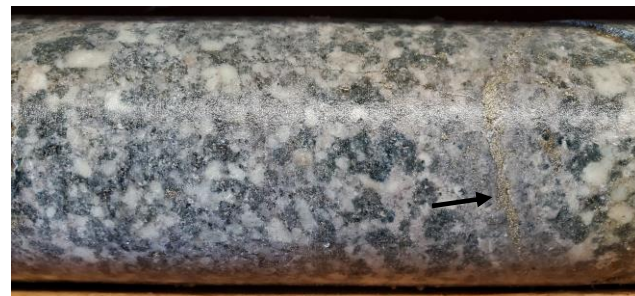
# Rip Cu-Mo Porphyry Project: RP24-002



41.3m Crowded porphyry, qtz-py-cp-mo veins 0.075% Cu  
0.04 g/t Au, 294 ppm Mo, 0.7 g/t Ag (0.25% CuEq)



60.3m Crowded porphyry, qtz-py-cp-mo veins 0.10% Cu  
0.04 g/t Au, 87 ppm Mo, 0.8 g/t Ag (0.17% CuEq)



67.3m Crowded porphyry, qtz-py-cp-mo veins 0.08% Cu  
0.03 g/t Au, 476 ppm Mo, 0.6 g/t Ag (0.33% CuEq)



99.7m Breccia, patchy chl-cal-py-cp-mo 0.13% Cu  
0.04 g/t Au, 23 ppm Mo, 0.9 g/t Ag (0.18% CuEq)



404m Crowded porphyry, py D veins with ser  
envelopes (pyrite halo)

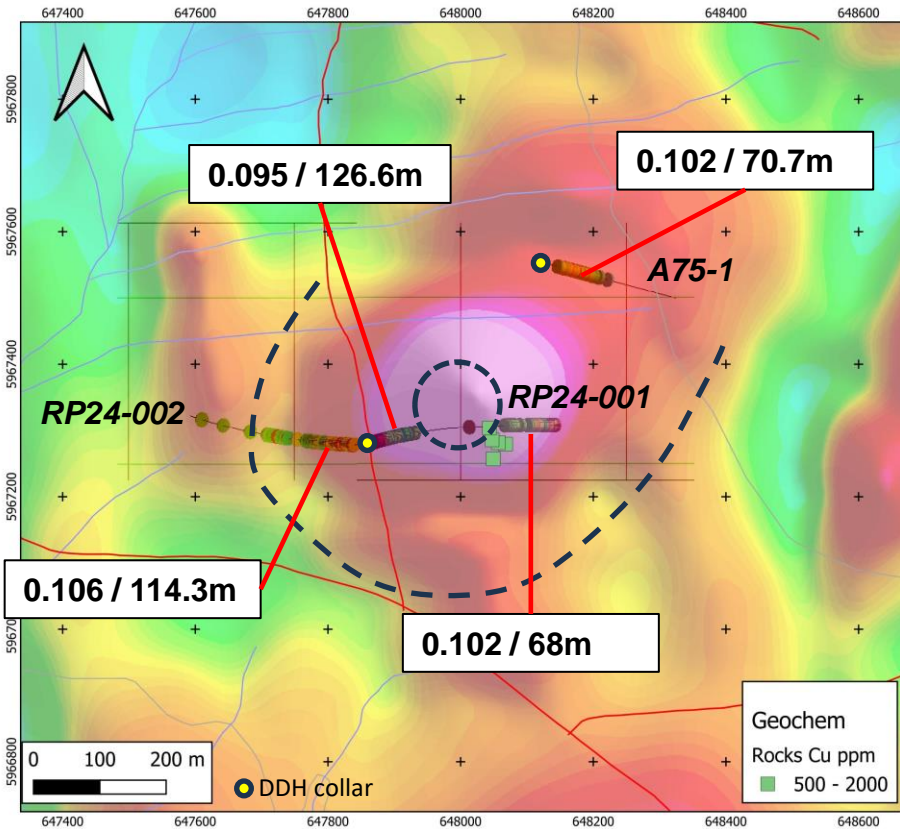
419-421m Crowded porphyry, intense py D veins  
with sericite envelopes (pyrite halo)



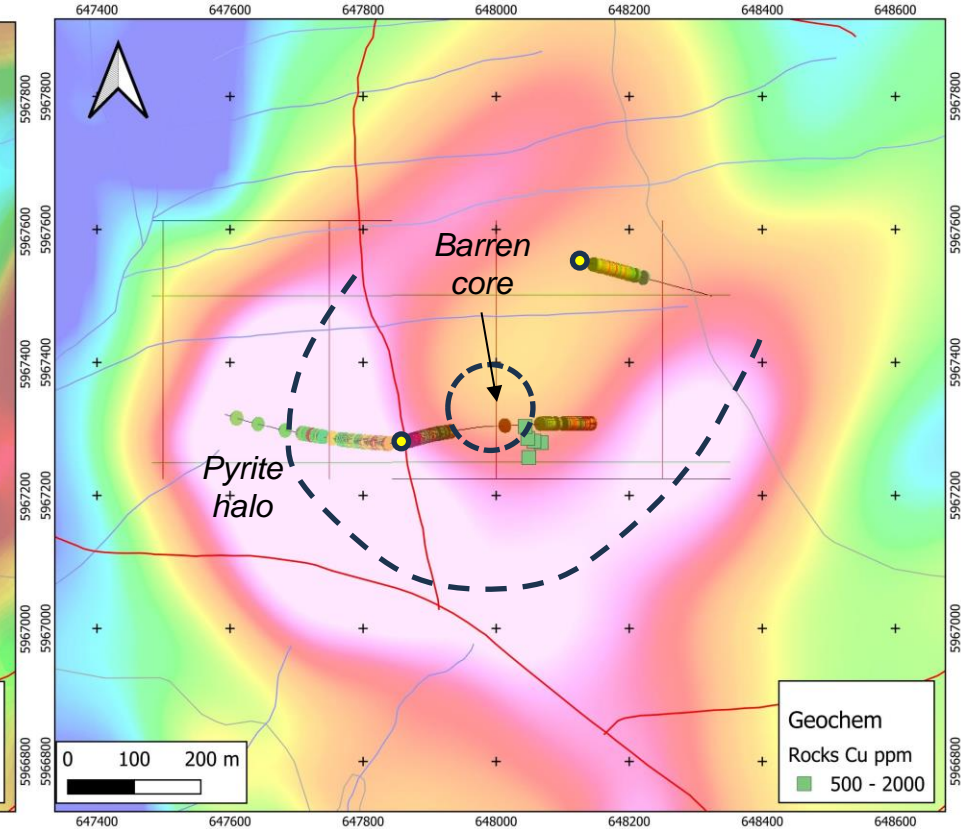
# Rip Cu-Mo Porphyry Project: North Target Interpretation

The 2024 mag, IP and drill program successfully resolved the original Rip anomaly into two separate porphyry systems, and demonstrated that the North target contains multiple intrusive phases and long intervals of low-grade Cu-Mo±Au±Ag mineralization. This target has been partly defined as a 600m wide subvertical cylindrical mineralized zone. The outer part of the chargeability high intersected in RP24-002 corresponds to a strongly D veined pyrite halo, while the core of mag high represents highly magnetic barren crowded porphyry. Note: assays for A75-1 are from Kennco Exploration assessment report #5819 (includes lab certificates).

The South target at Rip remains untested.



Drill holes with CuEq > 0.1 on magnetics (RTP)



Drill holes with CuEq > 0.1 on chargeability (850m elevation)

# Rip Cu-Mo Porphyry Project: Interra Agreement

In December 2023, ArcWest signed an Earn-In Agreement with Interra Copper (named changed to Copper Quest Exploration Inc., 26 Feb 2025) to explore the Rip Project with the following terms:

To earn an initial 60% interest, Copper Quest is required to fund \$2 million of work expenditures over a 4-year period and make staged cash and share payments to ArcWest totaling \$100,000 and 1,050,000 shares, respectively. ArcWest will be the operator during the initial earn-in period.

Further details on the Second Tier Earn-In are in ArcWest's News Release dated December 8, 2023.



# Summary

- ✓ The 2024 exploration program at Rip included an airborne magnetic survey, 3D DC-IP survey, and 1033m of drilling in two holes from a single setup.
- ✓ The magnetic and IP surveys outlined two adjacent porphyry targets, North and South, characterized by a highly magnetic core surrounded by a high chargeability torus indicating strong sulfide mineralization, a typical porphyry copper signature.
- ✓ The initial 2024 drill program tested only part of the west side and core of the North target zone. The program was successful in proving the porphyry interpretation, and intersecting lengthy intervals of low-grade Cu-Mo+Au+Ag porphyry mineralization, with multiple intrusive phases and polyphase veining. RP24-001 was collared in mineralization, but passed through a barren core zone, before resuming mineralized porphyry which is open to depth and to the east. The same upper zone in RP24-002, drilled to the west, ended in the pyrite halo.
- ✓ The South target, with a much larger magnetic core than the North, remains untested.