

An aerial photograph of a mountainous region. In the foreground, a wide, winding river flows through a valley, its banks composed of light-colored sediment. The valley is filled with dense green forests. In the background, rugged mountains rise, some with patches of snow and patches of reddish-brown rock. The sky is blue with scattered white clouds.

Todd Creek: One of the Largest Underexplored Copper-Gold Systems in British Columbia's Golden Triangle

***ArcWest is advancing its 100% owned Todd Creek project
with funding from mining giant Freeport-McMoRan***

***A drill program will commence in June 2025, with an
approved budget of \$4 million***

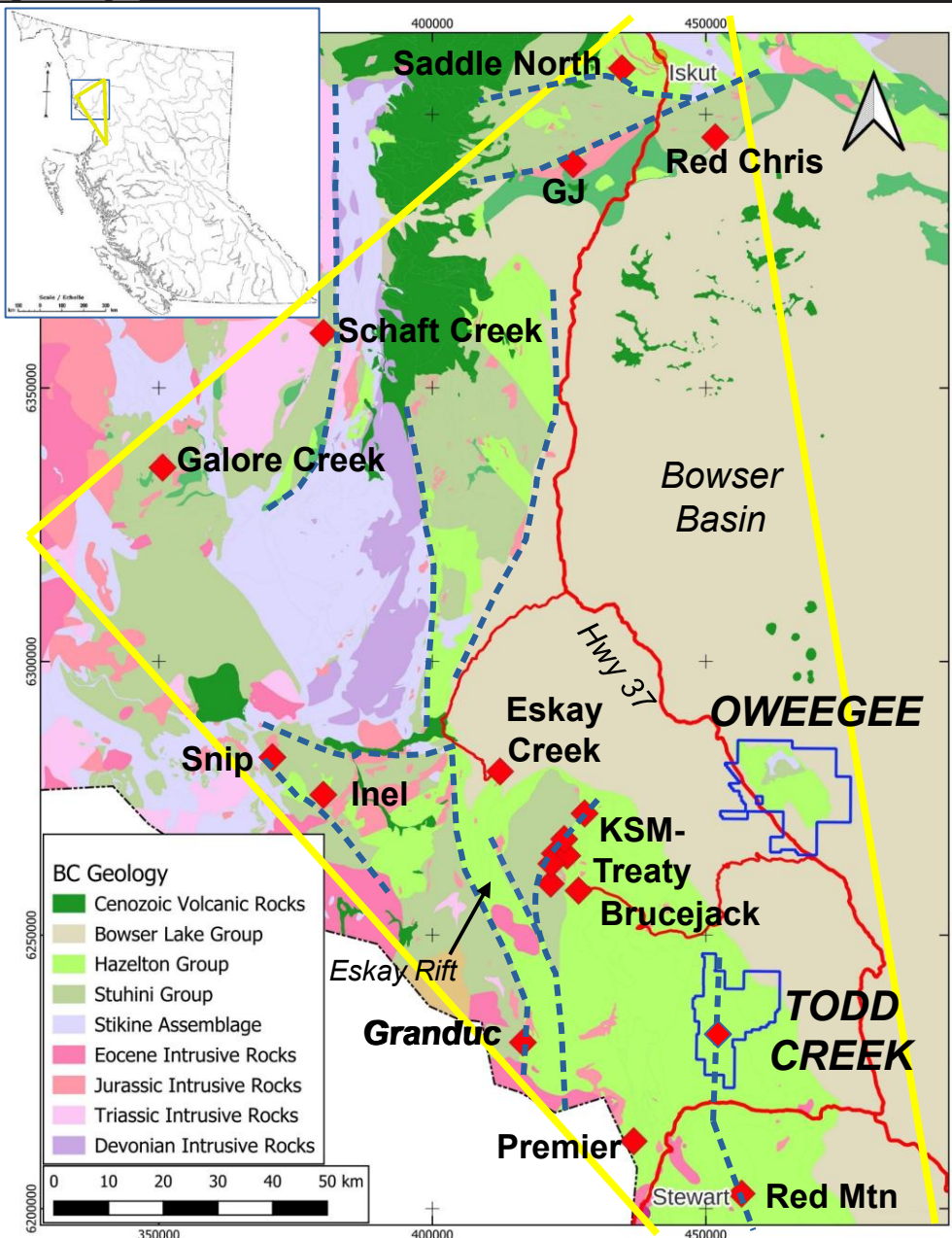
June 2025

Cautionary and Forward-Looking Statement Information

This presentation includes certain statements that may be deemed "forward-looking statements". All such statements, other than statements of historical facts that address exploration drilling, exploitation activities and other related events or developments are forward-looking statements. Although ArcWest Exploration Inc. ("ArcWest") believes the expectations expressed in such forward-looking statements are based on reasonable assumptions, such statements are not guarantees of future performance and actual results or developments may differ materially from those in the forward-looking statements. Assumptions used by ArcWest to develop forward-looking statements include the following: ArcWest's projects will obtain all required environmental and other permits and all land use and other licenses, studies and exploration of ArcWest's projects will continue to be positive and no geological or technical problems will occur. Factors that could cause actual results to differ materially from those in forward-looking statements include market prices, potential environmental issues or liabilities associated with exploration, development and mining activities, exploitation and exploration successes, continuity of mineralization, uncertainties related to the ability to obtain necessary permits, licenses and tenure and delays due to third party opposition, changes in and the effect of government policies regarding mining and natural resource exploration and exploitation, the exploration and development of properties located within Aboriginal groups asserted territories may affect or be perceived to affect asserted aboriginal rights and title, which may cause permitting delays or opposition by Aboriginal groups, continued availability of capital and financing and general economic, market or business conditions. Investors are cautioned that any such statements are not guarantees of future performance and actual results or developments may differ materially from those projected in the forward-looking statements. For more information on ArcWest, investors should review the Company's website (www.arcwestexploration.com) and filings that are available on www.sedar.com.

Technical information contained in this presentation has been reviewed and approved by Tony Barresi, P.Geo., a Qualified Person who is not independent of ArcWest.

ArcWest's Golden Triangle Assets: Todd Creek and Oweegeee



ArcWest's two large land packages in B.C.'s Golden Triangle are close to one of the world's largest clusters of unmined gold-copper deposits (Seabridge's KSM project) and several producing and past-producing gold-silver mines (Brucejack, Premier, Scottie Gold).

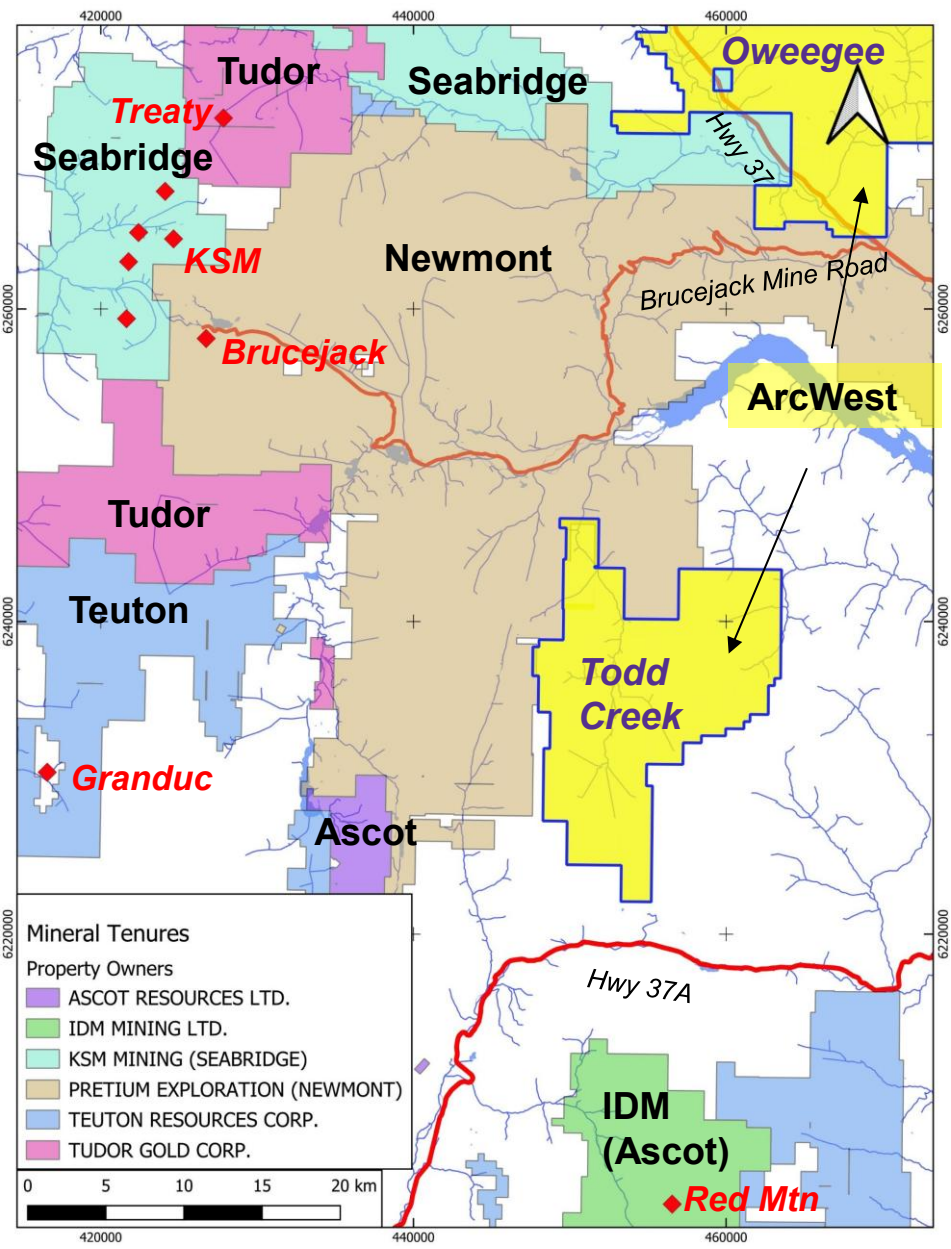
Both projects are crossed by paved highways and contain large underexplored copper-gold systems.

ArcWest announced an earn-in agreement with Freeport-McMoRan to explore Todd Creek in March, 2023. Freeport may earn a 51% interest in the project by spending \$20M over a five-year period and making staged cash payments.

To date Freeport has funded over \$3.3M in exploration at Todd Creek, including a 3D IP survey, geological mapping, rock and soil sampling, and hyperspectral work, **laying the foundation for robust exploration targeting that will guide an upcoming 2025 drill program.**



ArcWest Exploration: An Undervalued Copper-Gold Explorer



ArcWest's Oweegee Dome and Todd Creek projects are located in one of the most sought after addresses in mineral exploration, adjacent to Newmont's high-grade Brucejack gold mine property and close to the KSM-Treaty copper-gold district, a world-class gold and copper resource.

Selected mineral tenure land packages of the Brucejack/KSM district

Todd Creek Alteration Corridor



Orange Mountain

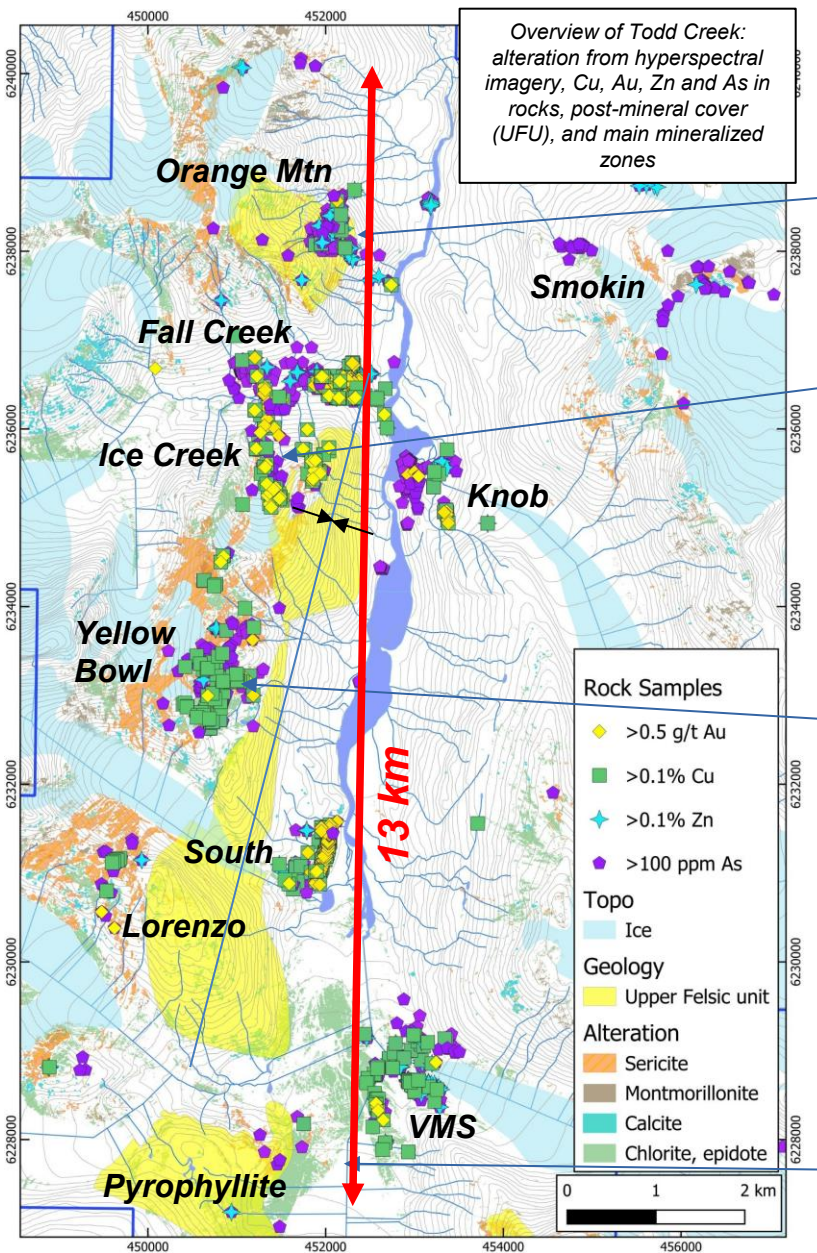
Yellow Bowl

**Fall
Creek**



South Zone

Todd Creek's 13 km Long Alteration Corridor



Todd Creek comprises a 13 km long corridor with extensive phyllic to advanced argillic alteration and multiple Cu-Au (Ag-Zn-Pb) mineralized zones. A felsic volcanic package (Upper Felsic unit) cores a central syncline and represents late to post-mineral cover.

The underexplored nature of the Todd Creek system is underlined by the fact that large new zones were discovered in 2019 (Smokin) and 2023 (Lorenzo).

Most zones have received limited (Orange Mtn, Yellow Bowl, VMS, Pyrophyllite) or mainly shallow (Fall Creek, Ice Creek, South) drilling.

The Todd Creek system contains diverse styles of mineralization, including epithermal, porphyry and VMS.

Todd Creek: A Huge Zoned Cu-Au-(Zn-Pb-Ag) System

A central zone of Cu>Au (Yellow Bowl) is flanked north and south by zones of Au>Cu (Fall Creek, Ice Creek, South) and by more distal zones of zinc enrichment (Orange Mountain, VMS)

This metal zonation and the associated phyllic alteration define a huge Cu-Au system, with multiple mineralized centers.

Orange Mountain:
Quartz-barite-sulfide epithermal vein



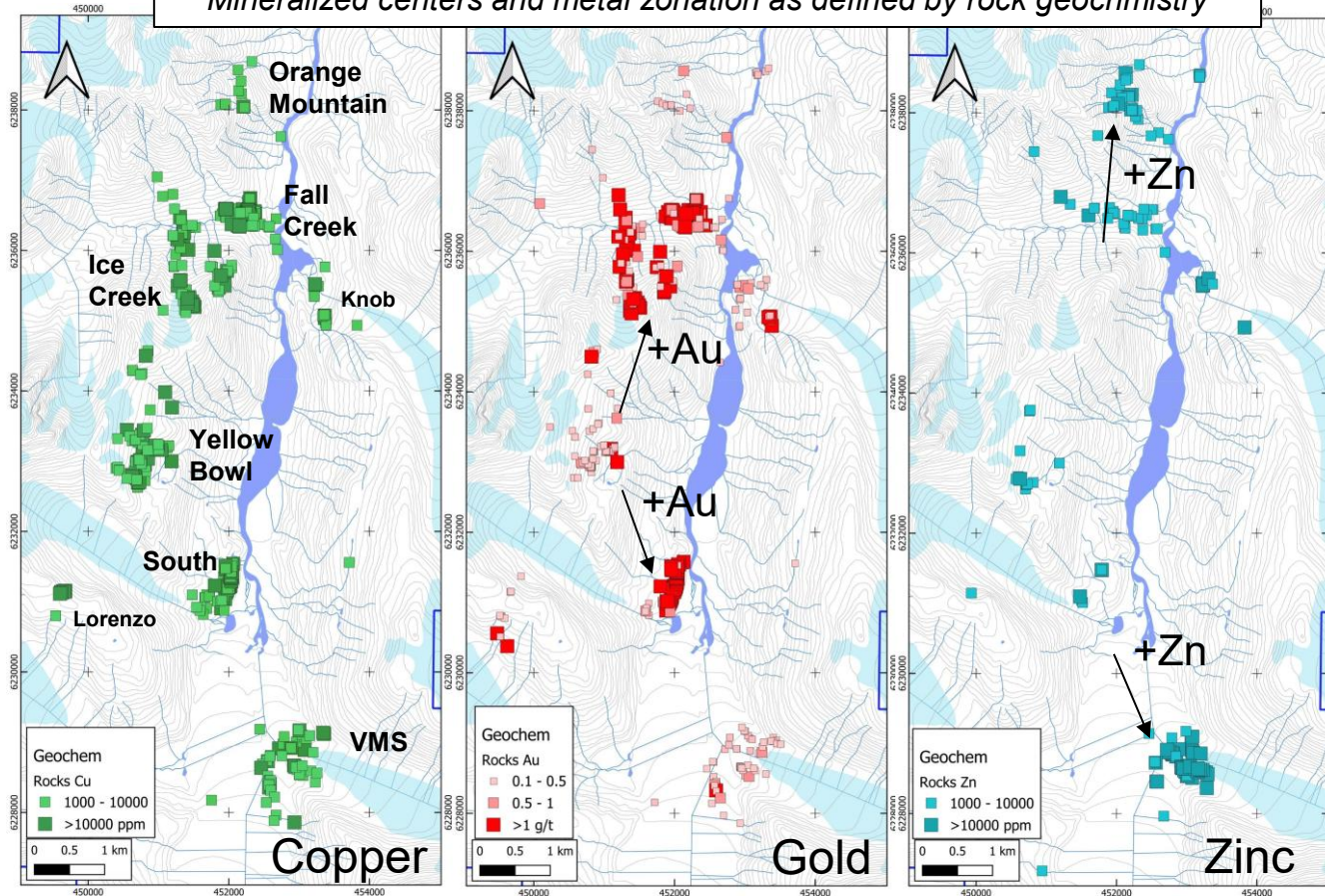
Yellow Bowl: Quartz-sulfide vein breccia, 2.92% Cu, 25 g/t Ag



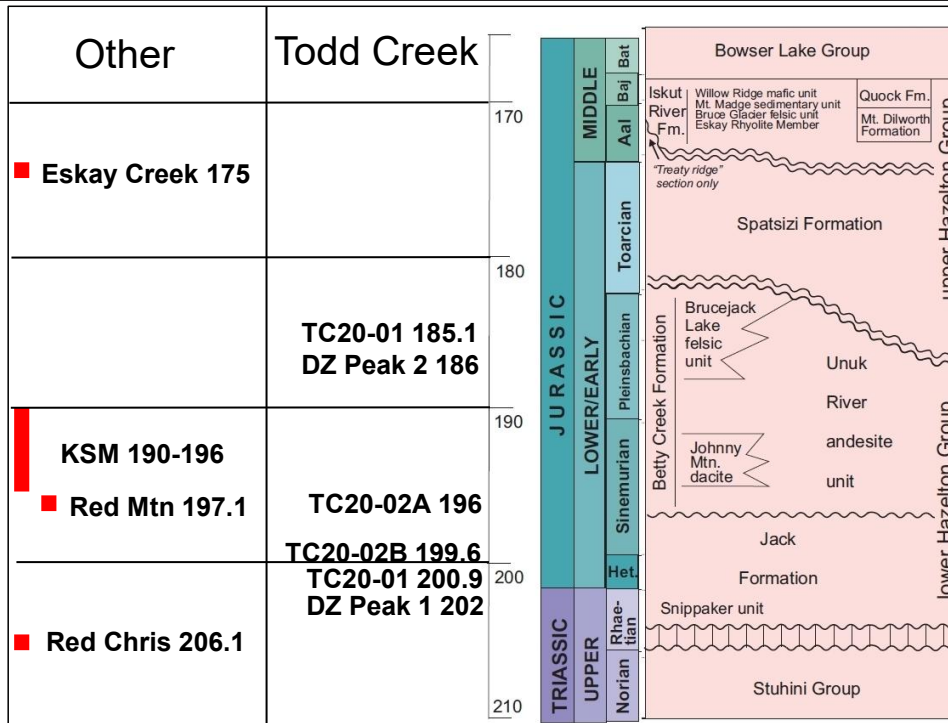
VMS Zone: massive sulfide 3.73% Cu, 6.46% Zn, 0.447 g/t Au, 58.2 g/t Ag



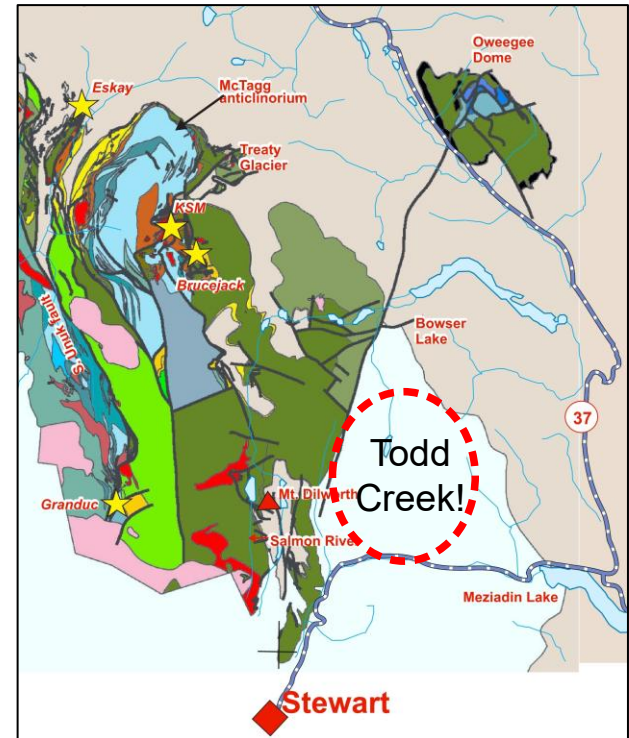
Mineralized centers and metal zonation as defined by rock geochemistry



Todd Creek: The Unknown Arc



Geochronology Todd Creek and elsewhere in the Hazelton Arc
 Nelson et al., BCGS Paper 2018-1 and Van Straaten and Nelson, 2020.



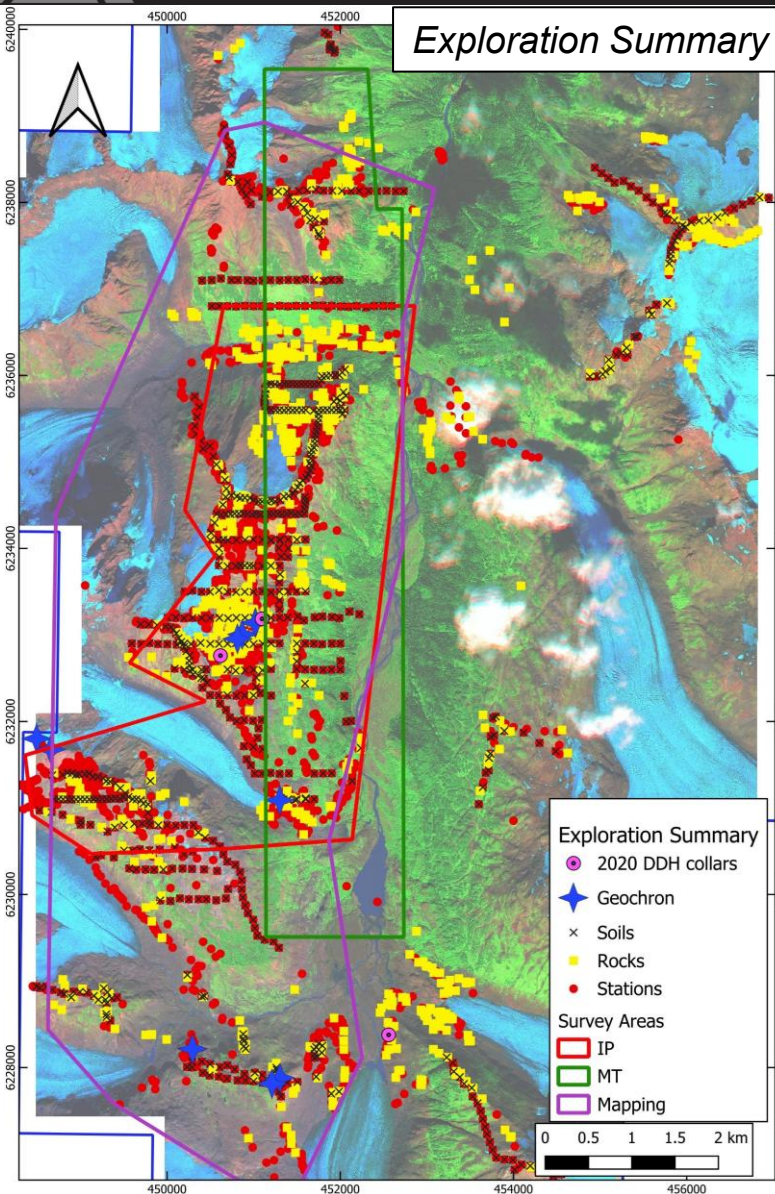
Map of Hazelton Group, Nelson et al., BCGS Paper 2018-1.

Despite its proximity to infrastructure and major gold and copper deposits, little is known about Todd Creek's place in the Hazelton Arc. For example, in Nelson et al.'s definitive 2018 Hazelton Arc map, Todd Creek is literally terra incognita!

Limited U/Pb geochronology at Todd Creek has indicated two separate ages for volcanic rock units, at 200-196 Ma and 185-186 Ma. The earlier age range overlaps the interpreted ages of the Jack and Betty Creek Formations (Nelson et al., 2018), as well as the Texas Creek intrusive suite, and the Au-Cu systems at nearby Red Mountain and KSM. Mineralization has not been directly dated at Todd yet. Based on geochron samples from 2023, **the age of the Upper Felsic unit averages 186.2 Ma (four samples) and for the lower Ridge unit averages 186.4 Ma (two samples), within the age range of the Brucejack Lake felsic unit.**

Todd Creek Exploration Since AWX Acquisition

Exploration Summary



Since 2019, ArcWest has successfully completed multiple exploration campaigns including partner funded programs in 2020-2021 (P2 Gold) and 2023-2024 (Freeport).

Exploration work has included the following:

Diamond Drilling – three drill holes, 1,028m (2020).

Geophysics – 6 by 2-3 kilometre 3D induced polarization (IP) survey, using Dias Geophysical’s distributed array deep IP survey system; MT survey.

Geology – Geological mapping completed over a 12 by 4 kilometre area with 4,042 geological stations.

Geochemistry – 1,096 rock samples, 673 soil/talus fine samples.

Hyperspectral – 676 rock samples and 458 soil sample pulps analyzed using a TerraSpec 3 hyperspectral analyzer to determine alteration mineralogy. WorldView 3 satellite imagery analysis.

Petrography – 16 drill core samples from the South, Fall Creek and Orange Mountain zones analyzed by independent expert petrographer Craig Leitch.

Geochronology – 10 U/Pb zircon dates.

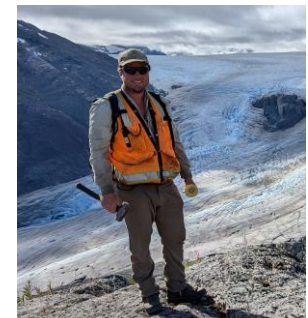
2023-4 exploration team



Charlie Greig (right)
M.Sc., P.Geo.

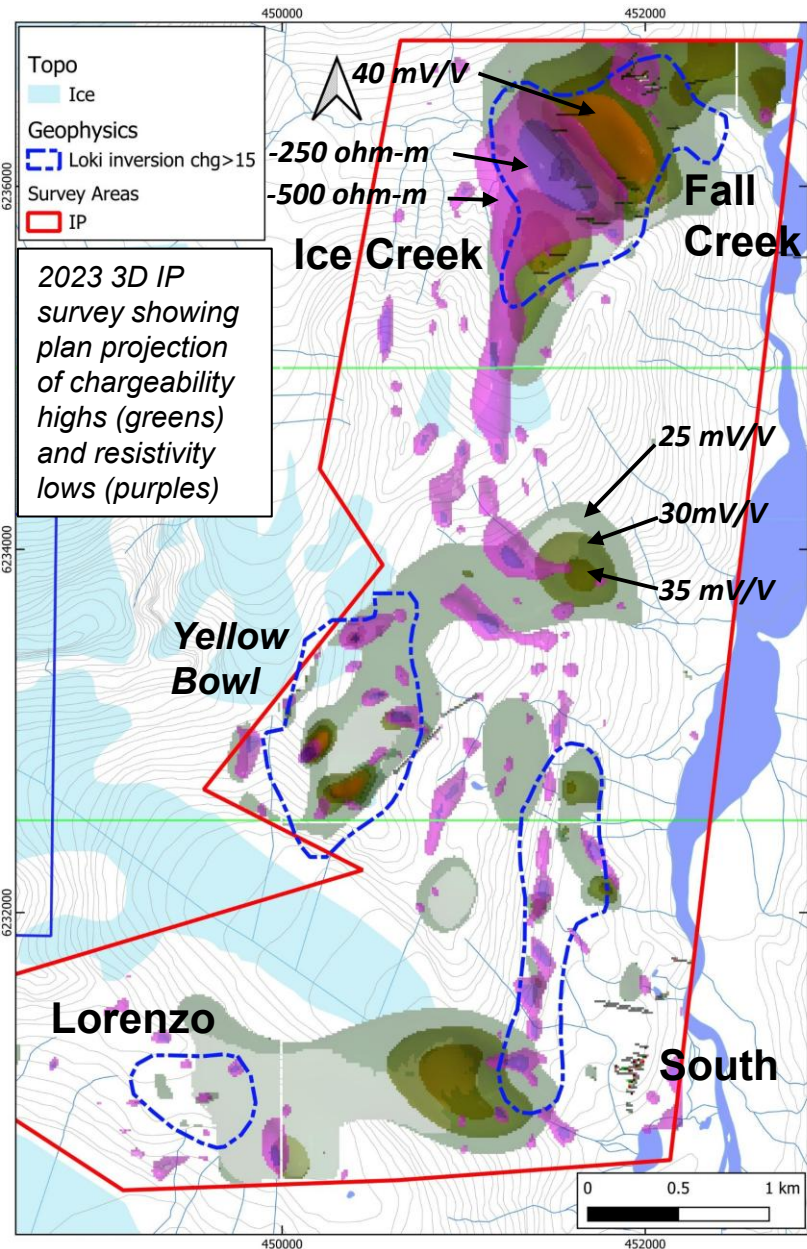


Tony Barresi
Ph.D., P.Geo.



Scott McBride
M.Sc., P.Geo.

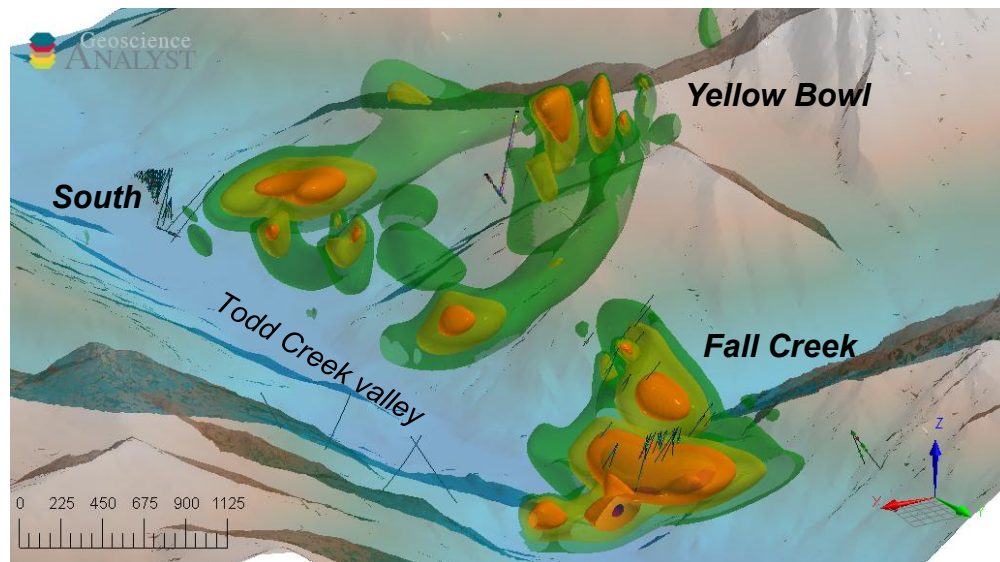
Todd Creek 2023 3D IP Survey



The 2023 exploration season saw the completion of the first 3D IP survey of the Todd Creek system, from Fall Creek to South Ridge.

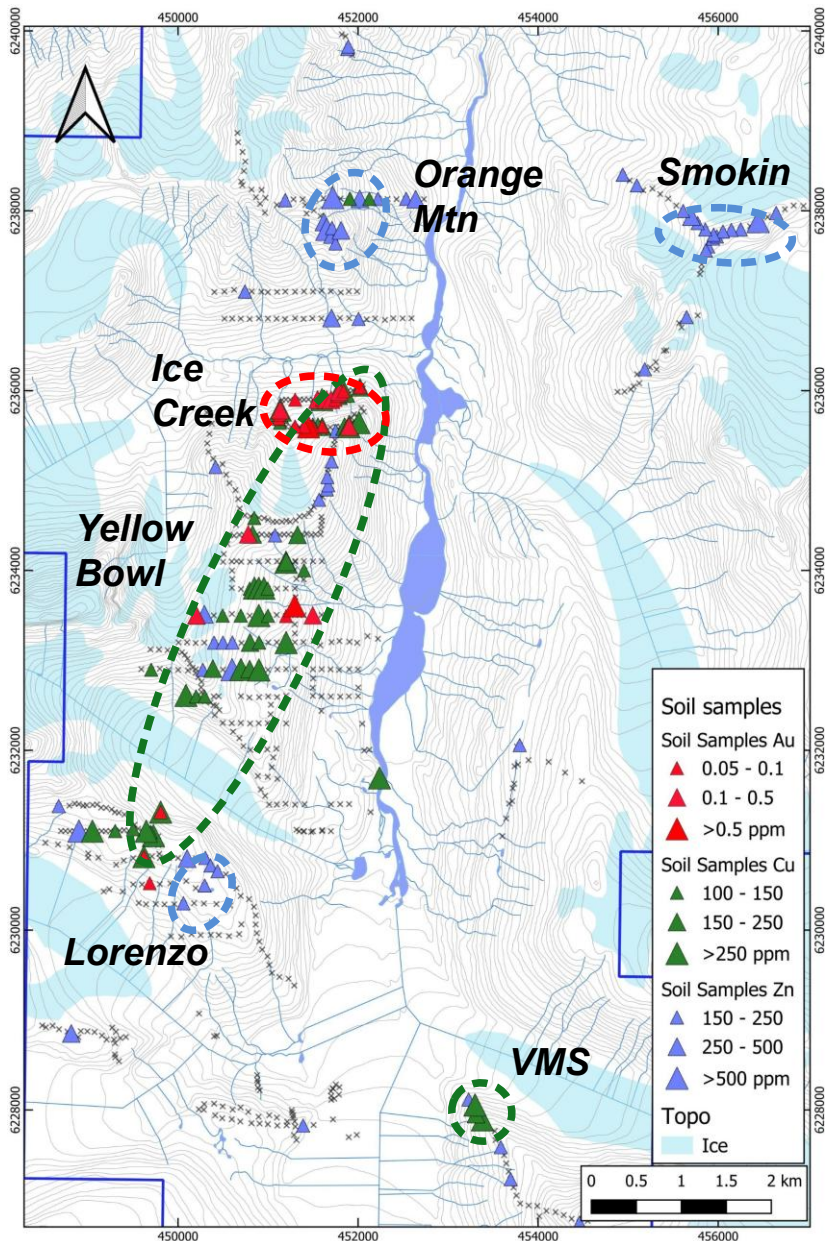
The survey outlined multiple chargeability highs using both UBC and Loke inversions. The strongest and largest anomaly extends beneath the Fall Creek and Ice Creek Cu-Au mineralized zones and overlaps a very strong (<250 ohm-m) resistivity low (conductivity anomaly).

All anomalies are virtually untested by drilling.



3D view of 25, 30, 35 and 40 mV/V chargeability isosurfaces and drill holes, looking down Todd Creek Valley from the NE.

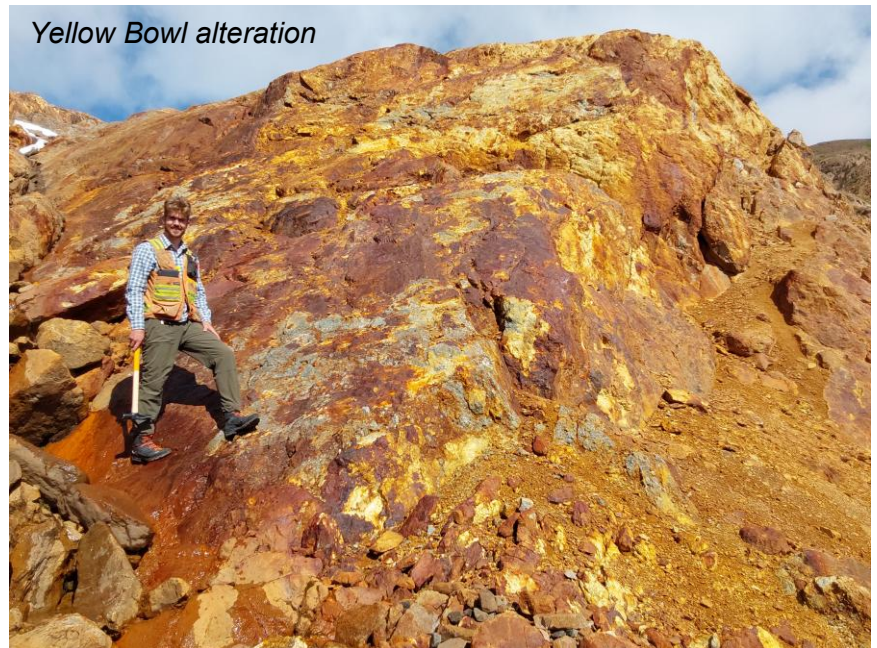
Todd Creek 2023-2024 Soil Sampling



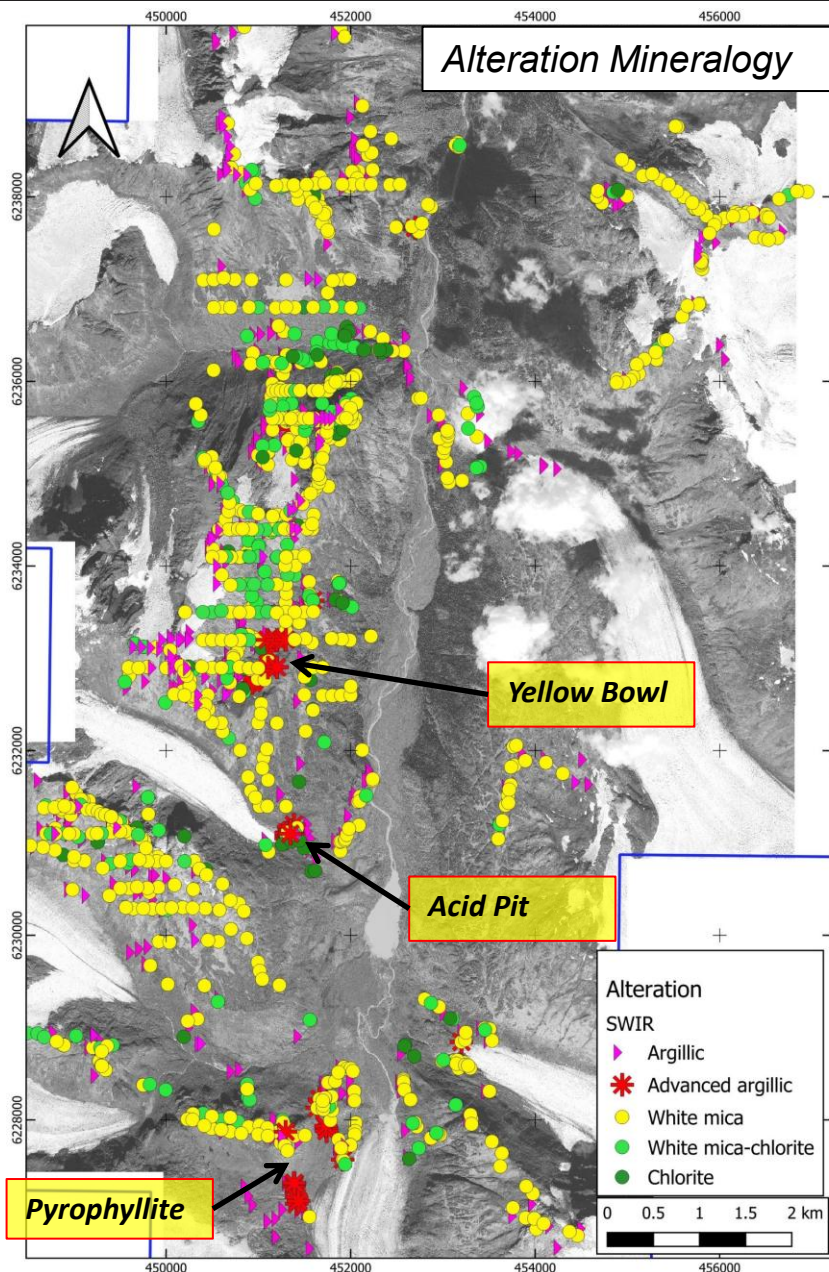
A program of systematic soil/talus fines sampling in 2023-2024 clearly delineates a **6 x 1 km Cu anomaly** encompassing the alteration and mineralization at Yellow Bowl, Ice Creek and extending across a glacier to the Lorenzo Zone.

Smaller Zn-Cu anomalies are defined at Orange Mountain and VMS Zone.

High Au samples are concentrated in the Ice Creek / Fall Creek area at the north end of the main Cu anomaly.

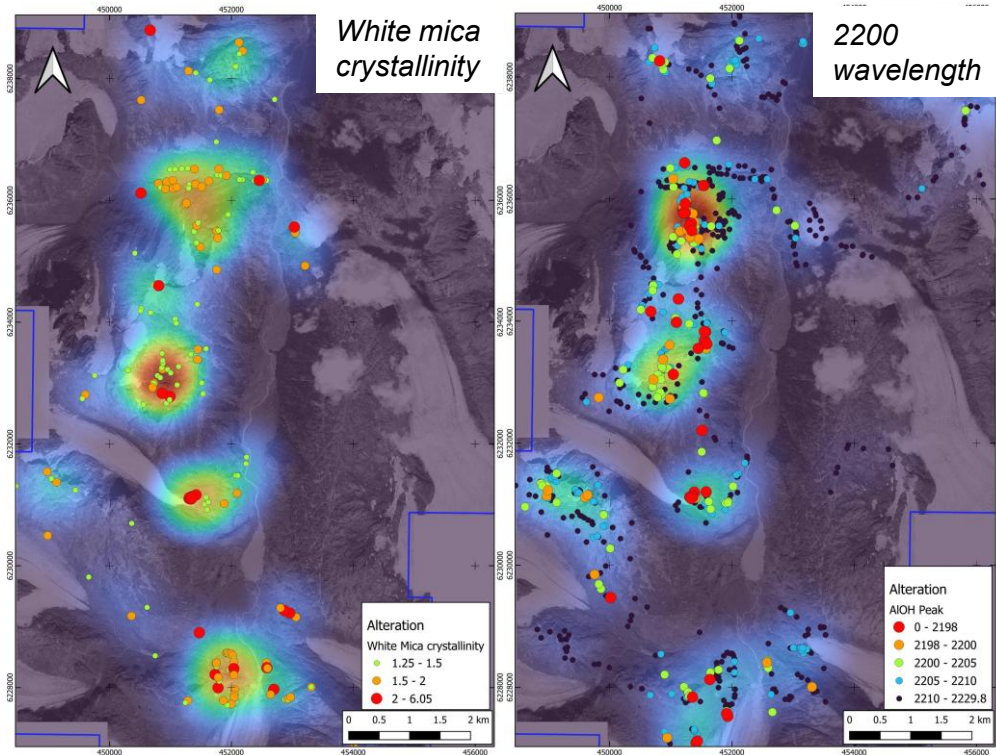


Todd Creek 2023-2024 Alteration Survey (TerraSpec Analyses)

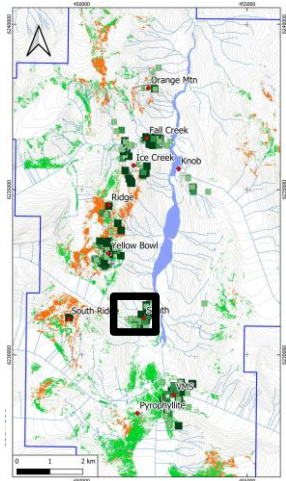


Alteration at Todd Creek is dominated by widespread phyllic (white mica), with lesser sericite-chlorite and argillic (illite) alteration and advanced argillic (pyrophyllite / alunite / diaspore) at Yellow Bowl, Acid Pit and Pyrophyllite Zone.

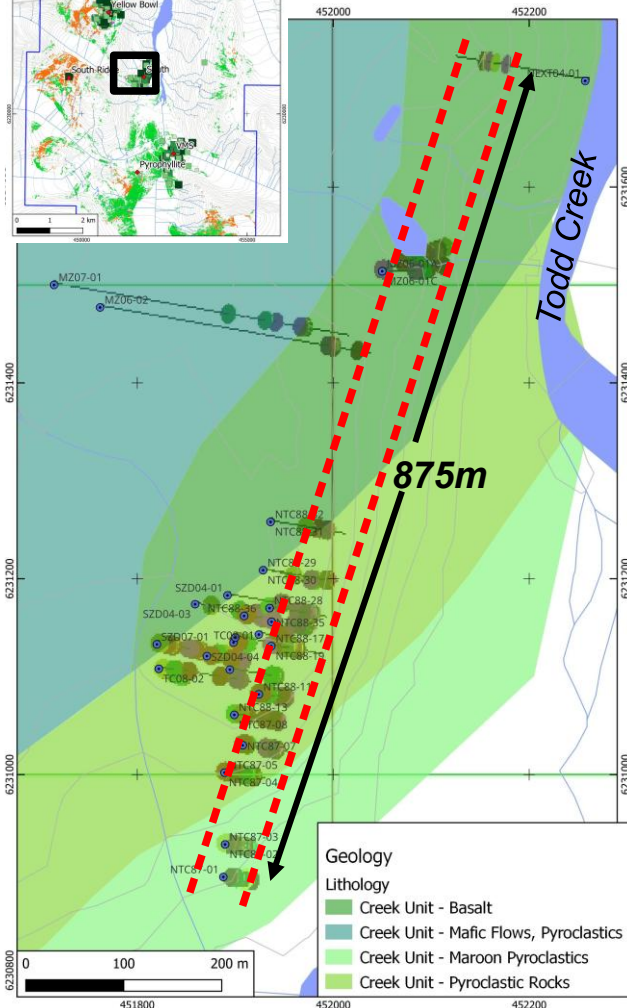
High crystallinity values for white micas point to higher temperature alteration centers at Ice Creek, Yellow Bowl, Acid Pit / South Zone, and Pyrophyllite Zone, while AIOH wavelength data shows smaller zones typically generated by low pH (acidic) fluids, especially at Ice Creek.



South Zone: High Grade Au-Cu Lodes

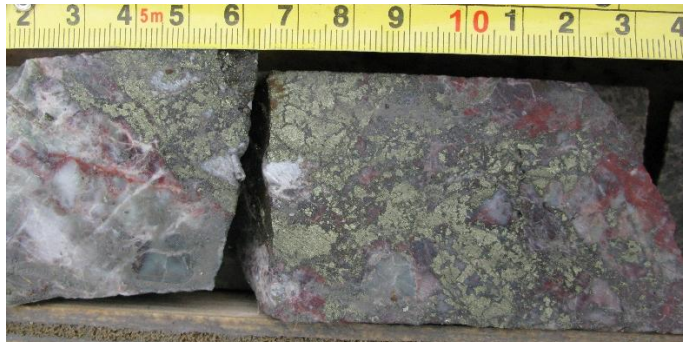


South Zone geology and drill holes (33 Noranda 1987-8; 10 Geofine 2004-2008) showing all Au>0.2 g/t

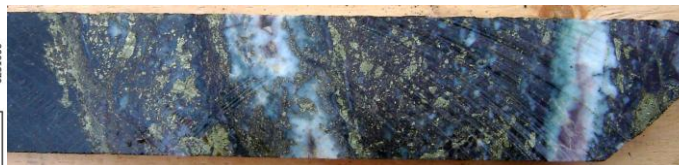


Historical drilling at South Zone has consistently intersected epithermal Au-Cu mineralization over a strike length of 875m and up to 250m down dip, with intercepts up to **3.6 g/t Au and 0.37% Cu / 27.75m** in NTC88-19 (not true width).

Au and Cu occurs in banded to coxcomb multistage quartz-sulfide veins and breccias with abundant chalcopyrite, hematite and jasper. Mineralization has similarities to high grade Au-Cu epithermal systems such as Kora (PNG) and Hod Maden (Turkey).



TC08-01 1.83% Cu, 7.06 g/t Au / 0.86m (60.2-61.06m)



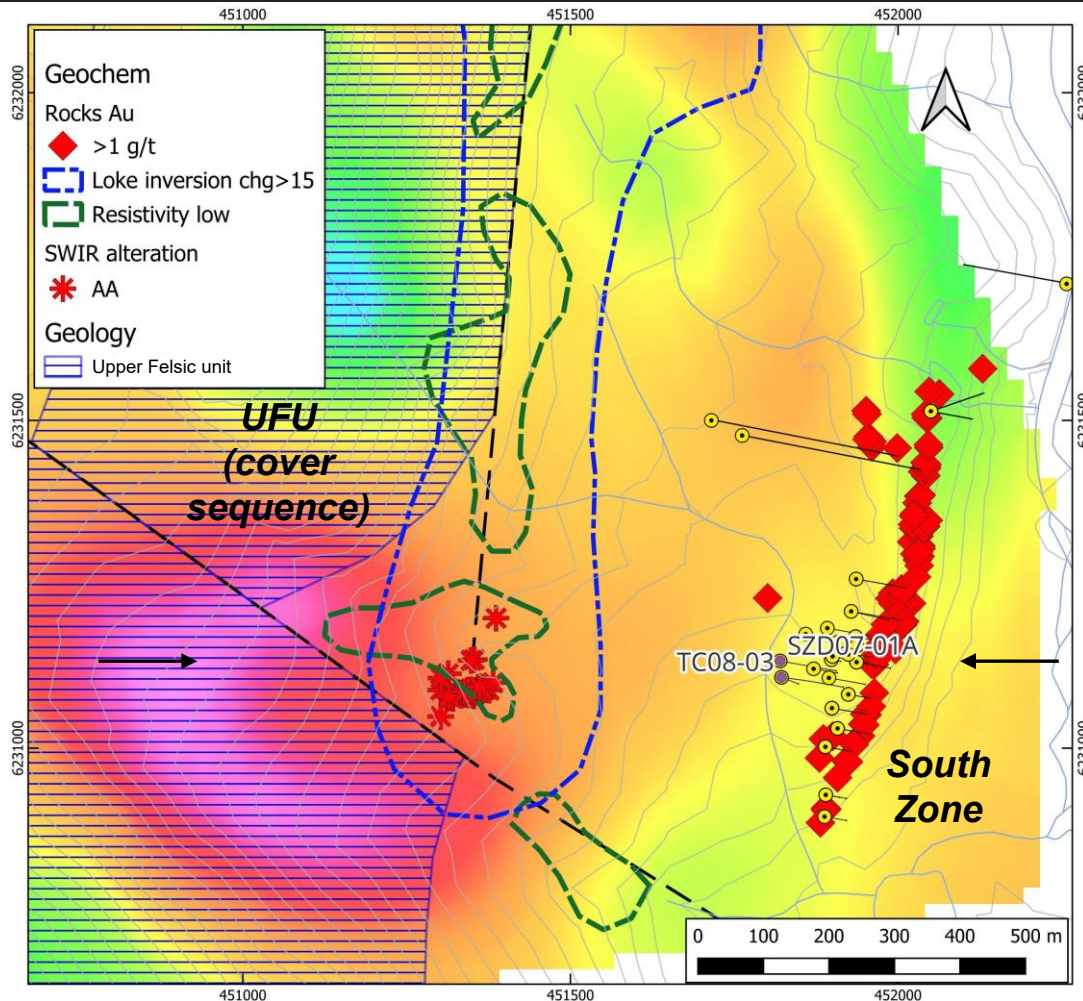
MZ06-01D 5.35% Cu, 7.67 g/t Au / 0.35m (67-67.35m)

Drill hole photos of NQ core, diameter 47.6 mm



South Zone outcrop

South Zone and Acid Pit: Porphyry Links



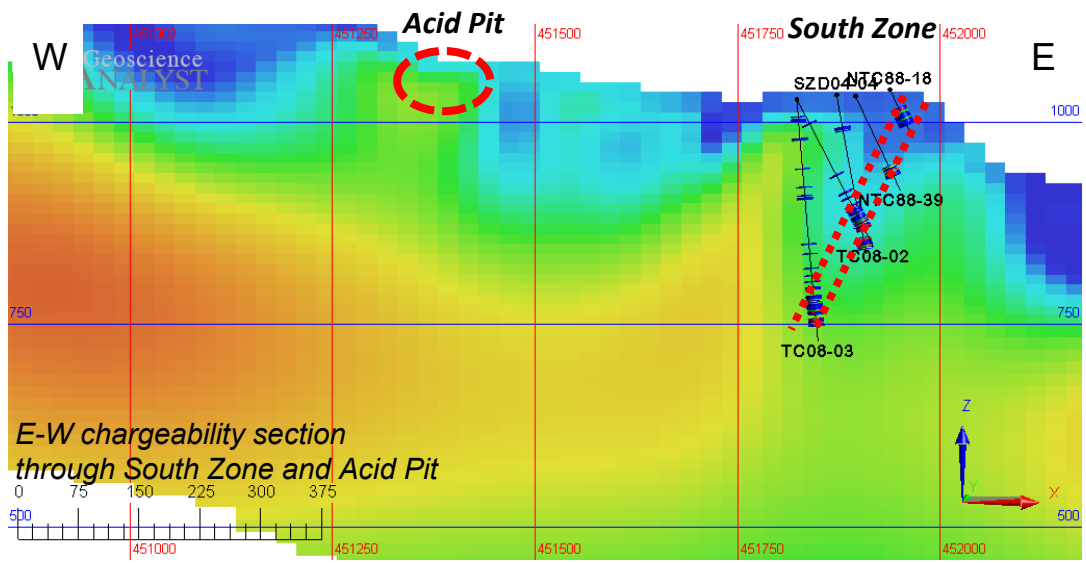
Geophysical anomalies, faults and UFU cover sequence in the vicinity of South Zone and Acid Pit. Background is chargeability at 400m depth below surface, showing a strong high just west of Acid Pit. Map shows coincidence of chargeability high (Loke inversion) and resistivity low extending north from Acid Pit. Surface trace of South Zone is shown by historical samples with >1 g/t Au and shallow drill hole collars. AA = advanced argillic alteration from SWIR analyses of Acid Pit samples. Arrows – section line (next page)

Acid Pit is a zone of intense advanced argillic alteration (alunite - pyrophyllite - diaspore - dickite - kaolinite) discovered in 2023 just 500 metres west of the **South Zone epithermal Au-Cu lodes**.

The 2023 IP survey revealed a 600m wide zone of high chargeability (30-40 mV/V) about 300m deep, below and west of the Acid Pit (UBC inversion) and a coincident resistivity low and chargeability high (Loke inversion) extending from Acid Pit to the north with a strike length of 3 km.

Both South Zone and Acid Pit may represent high level / lateral expressions of a much larger porphyry system at depth. Relogging of drill hole SZD07-01A in 2024 indicated that porphyry style mineralization in intrusive rocks has been intersected in South Zone.

South Zone: Porphyry Links



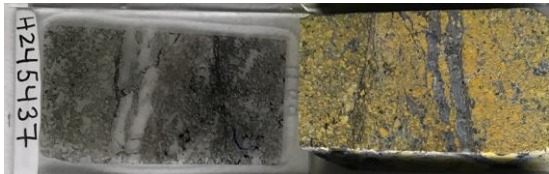
Drilling in 2008 successfully intercepted the South Zone 250m down dip in TC08-03.

A 2023 petrographic study of **TC08-03** showed at 278m **well-developed, partly preserved potassic alteration** around quartz-carbonate-chalcopyrite-pyrite veins with central partings of similarly altered rock (Leitch, 2023).

The potassic alteration {K-feldspar-chlorite (after biotite?)-quartz-hematite (after magnetite)-pyrite-rutile (after ilmenite)} contains relict magnetite which is mostly replaced by hematite, a typical “retrograde” alteration in a highly oxidized porphyry system.

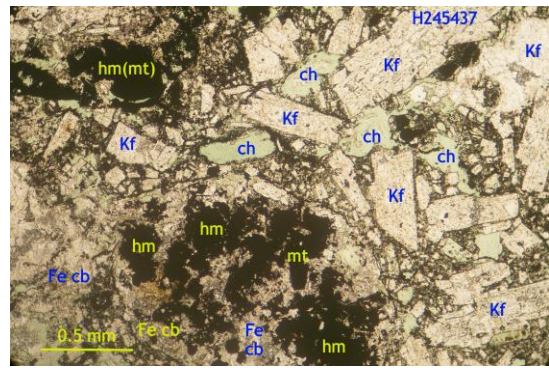
- 88-18: 0.10% Cu, 0.81 g/t Au / 16.85m; 88-39: 0.14% Cu, 0.85 g/t Au / 11.5m
- 04-04: 0.26% Cu, 2.6 g/t Au / 12m; 08-02: 0.26% Cu, 1.7 g/t Au / 11m
- 08-03: 0.11% Cu, 0.23 g/t Au / 27m (246-273m)**

The presence of a relict potassic assemblage at depth in this hole suggests a strong link between the epithermal Au-Cu lodes at South Zone and a deeper porphyry system.



Offcuts and thin section showing potassic alteration at 278m, TC08-03

H425417-H42521: 0.41% Cu, 1.36 g/t Au / 2.08m (262.54-264.62m)



South Zone Porphyry in SZD07-01A



Crustiform hematite and cockade quartz veining, QSP alteration; 2.99 g/t Au (122-123m)

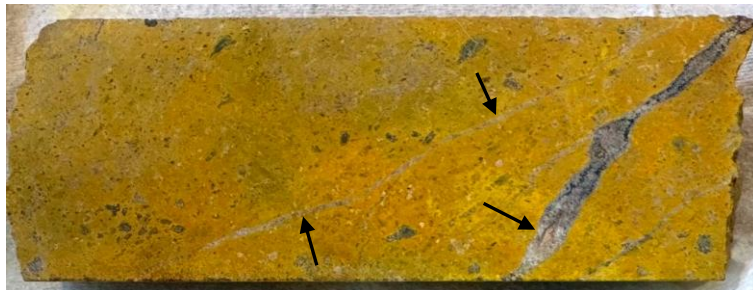
Relogging shows South Zone drill hole SZD07-01A intersected intrusive rocks from surface to 227.95m and 252-255m, with an aplitic intrusive border phase from 227.95-228.6m.

QSP alteration from surface to 123m is accompanied by epithermal crustiform veining, with K-feldspar alteration dominating below. K-feldspar alteration accompanies polyphase quartz-sulfide and carbonate veining and brecciation.

Intense K-feldspar selvages (yellow stain) around qtz-sulfide vein 189.5m

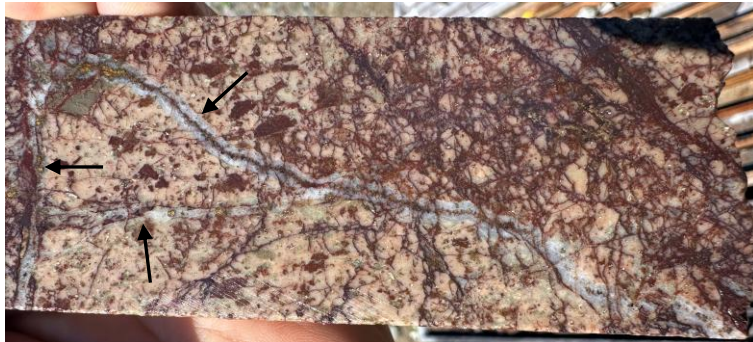


Intense K-feldspar alteration and micro-brecciation 0.166 g/t Au 0.23% Cu; 227.95m



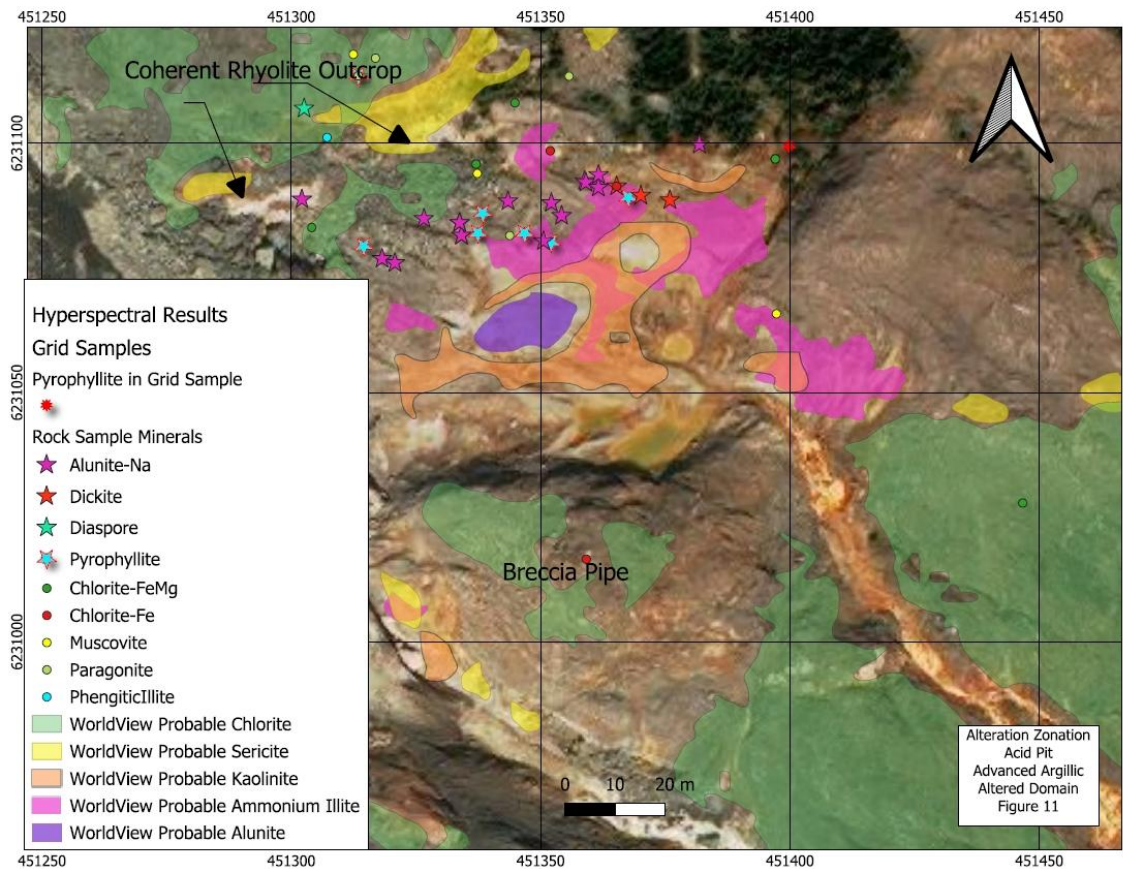
Intense K-feldspar alteration (yellow stain) with quartz-sulfide veins (arrows) 0.13 g/t Au, 0.11% Cu; 203m

Quartz-sulfide veins cut by carbonate stockwork 0.303 g/t Au, 0.19% Cu; 253.1m



K-feldspar alteration with quartz-sulfide B veins (arrows) cutting intense hematite stockwork 0.166 g/t Au, 0.23% Cu; 227-229.95m

Acid Pit Advanced Argillic Alteration

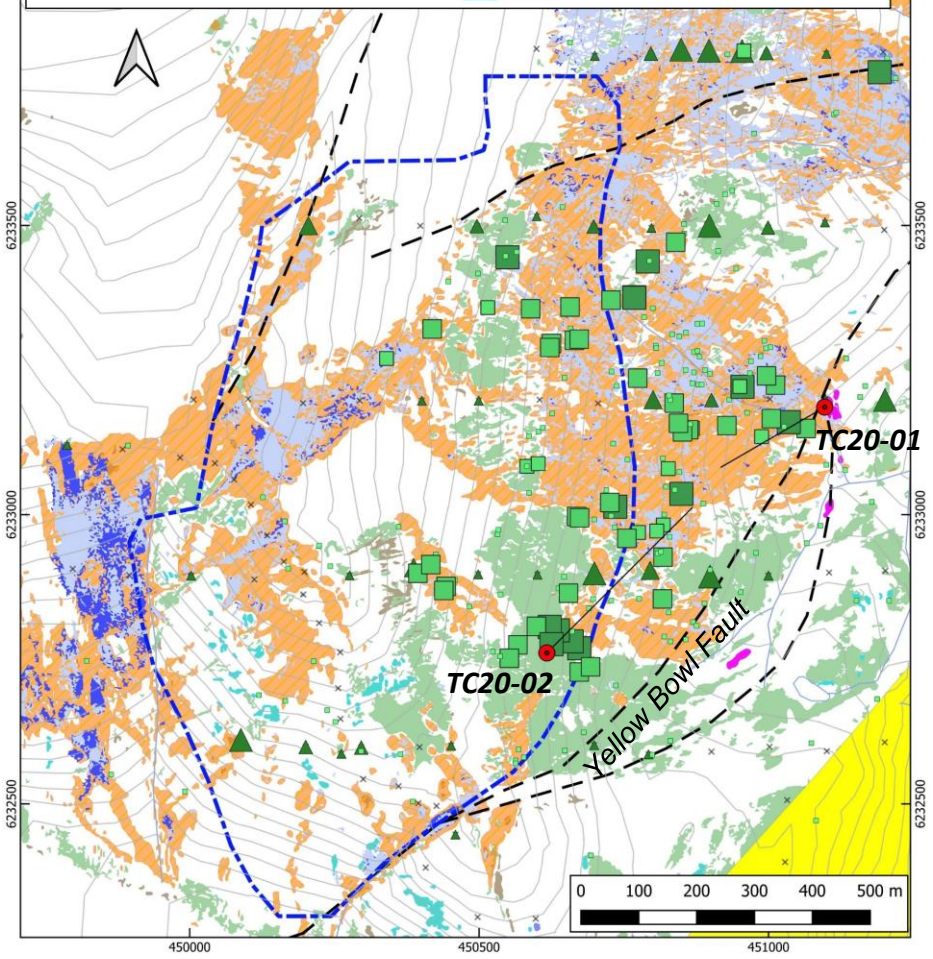
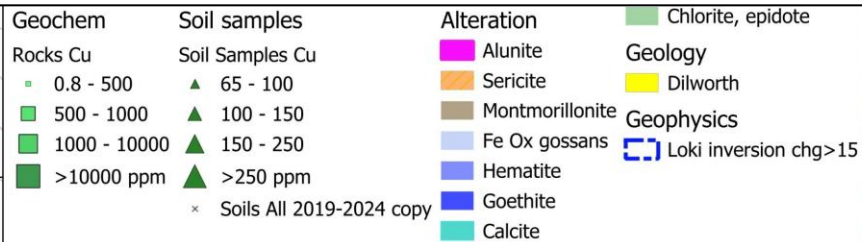


Acid Pit advanced argillic alteration



Yellow Bowl Cu-Au Zone

Alteration (WorldView 3), Cu in rocks + soils and Loke chargeability high

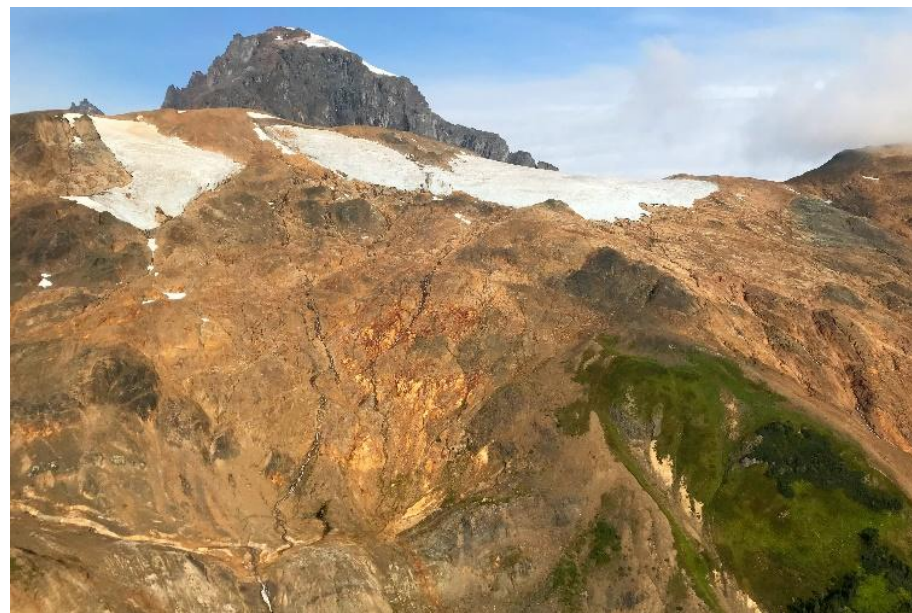


The largest gossanous area on the property hosts strong Cu-Au values in rocks over a 1 by 2 km area and has been tested by just two drill holes to date.

Pyrite and chalcopyrite are associated with strong QSP alteration with up to 10% or more disseminated sulfides.

Larger gossans are associated within “blow-outs” along intersecting structures.

Poly lithic hydrothermal breccias are significant in the southern part of Yellow Bowl.



Yellow Bowl main gossan looking west

Yellow Bowl Alteration and Breccias



Bedding Parallel
Alteration Domain
Lithology Controlled?

Steep NE Oriented Bedding in Less
Altered Rock



Polymictic breccia with intrusive,
volcanic, quartz vein clasts



Sulfide replaced fault breccia



Quartz-chalcopyrite vein clasts



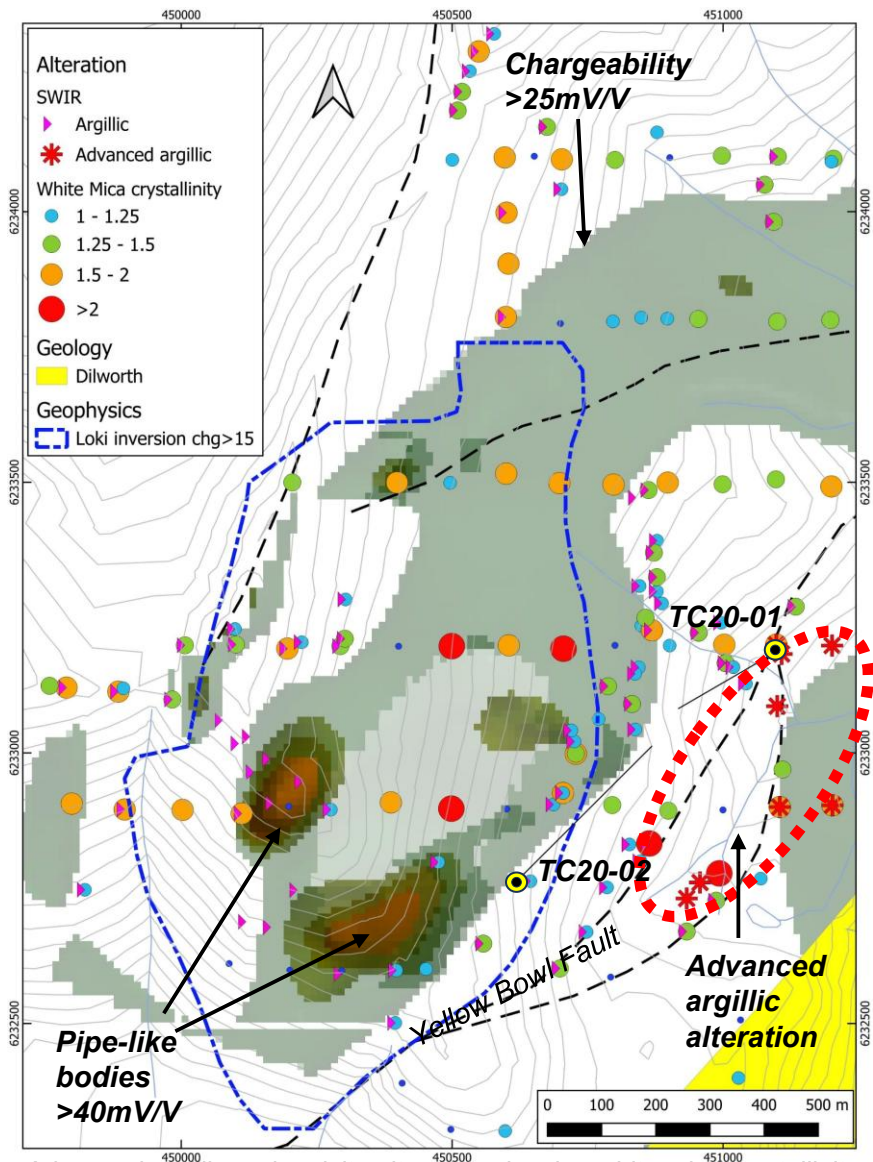
Intrusive clasts



Quartz-sulfide matrix hydrothermal
breccias

The presence of breccias with intrusive, quartz-sulfide vein and porphyry clasts strongly suggests the potential for a buried porphyry at Yellow Bowl

Yellow Bowl Alteration and Untested Chargeability Highs



TerraSpec based alteration studies in 2023-2024 showed that extensive sericite alteration has high white mica crystallinity values (>1.5) signifying higher temperatures and/or a long lasting system which extends over a broad area west and north of the two 2020 drill holes and overlying the chargeability highs.

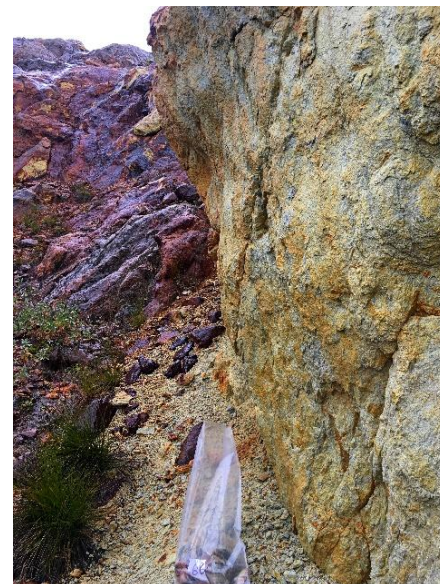
Advanced argillic alteration is also present but largely confined to the Yellow Bowl Fault.

The 2023 IP survey showed that 2020 drill holes also missed the main chargeability highs, which are completely untested.

Yellow Bowl Main sample 656607:
1.26% Cu, 0.407 g/t Au

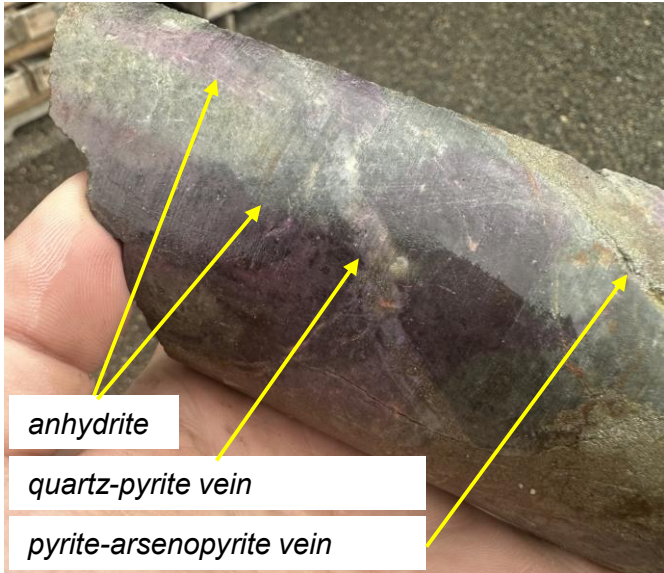


Yellow Bowl South sample 429531:
1.46% Cu, 0.559 g/t Au



Advanced argillic and sericite alteration showing white mica crystallinity values with plan projection of chargeability highs in green (Loke inversion blue dashed line)

Yellow Bowl Drilling 2020



TC20-01 (156m) py-aspery and quartz veins in tuff with disseminated py and purple anhydrite



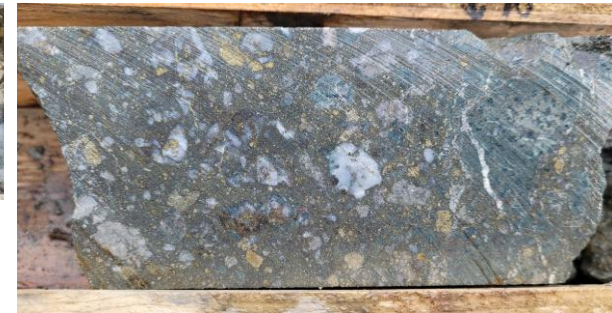
TC20-01 (176 and 219m) quartz calcite and sulfide veins with sericite-pyrite envelopes

Two 2020 drill holes (-50 dip) tested a small part of the Yellow Bowl zone just east of the chargeability high.

Both drill holes intersected broad zones of intense sericite alteration and multiple sulfide-quartz±carbonate vein and breccias with copper values up to 4.2%/1.78m and anomalous Au, Ag, Pb, Zn, As Sb, Bi, Te and Mo.



TC20-02 (18.6m) quartz-carbonate-sulfide epithermal vein (0.798% Cu, 23.6 g/t Ag, 0.96% Zn)



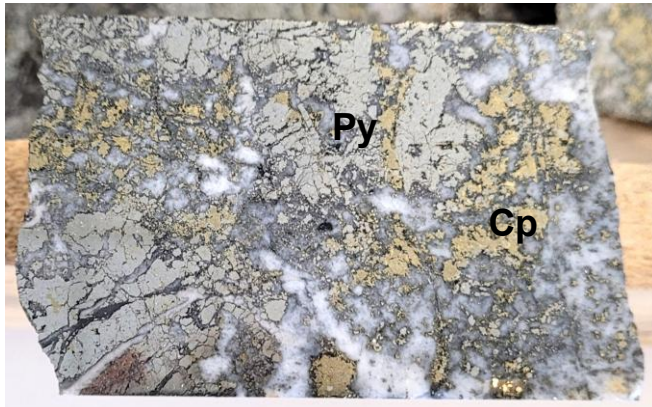
TC20-02 (69.8m) Polymictic breccia (0.85% Cu, 0.11 g/t Au, 20.2 g/t Ag)



TC20-02 (479m) QSP altered dacite with sooty pyrite seams

Drill hole photos of HQ core, diameter 63.5 mm

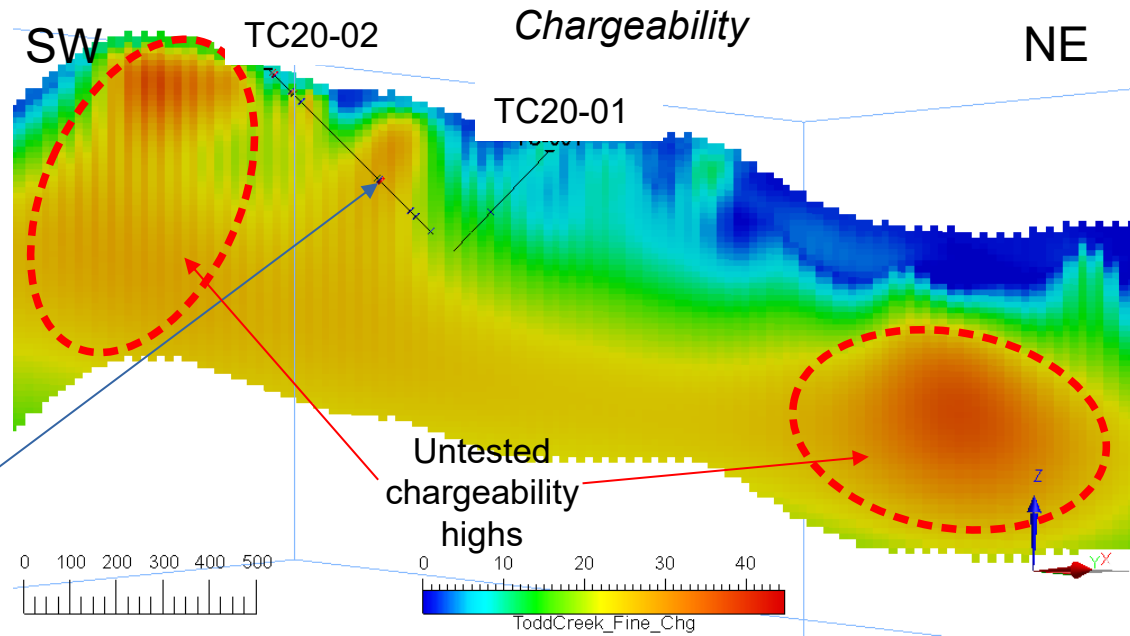
Yellow Bowl Untested Chargeability Highs



Top TC20-02 (329-338) QSP alteration with dense polyphase veining (up to 0.17% Cu)

Middle TC20-02 (340.7-342.5m) quartz-sulfide breccia vein (2.3% Cu, 0.16 g/t Au, 5.5 g/t Ag / 4.58m, 339.47-344.05m)

Bottom TC20-02 (344.4m) multiple vein sets with sericite haloes

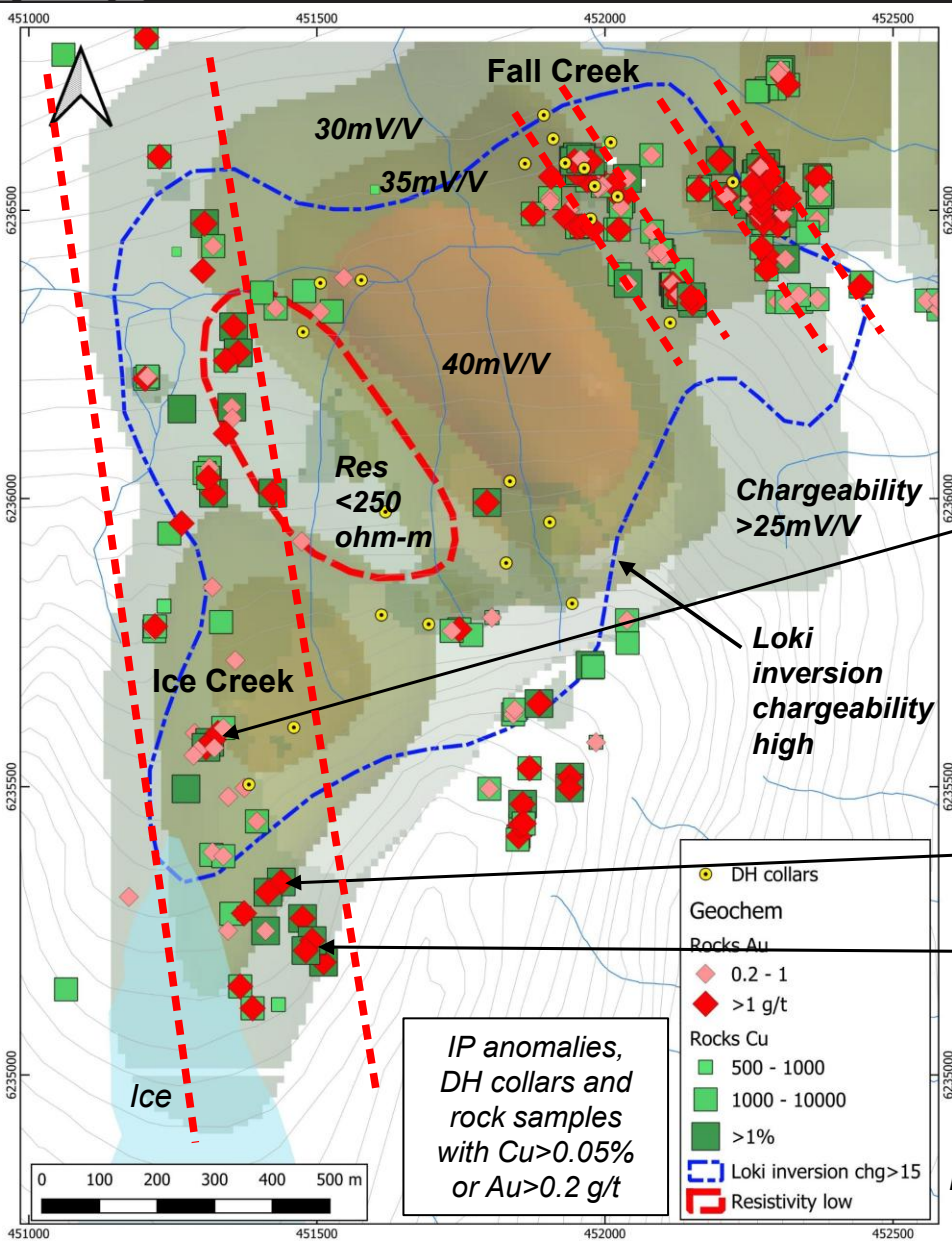


The best mineralized interval in TC20-02 (0.78% Cu, 84 ppb Au / 14.05m from 330m) was a zone with a quartz-sulfide breccia vein flanked on both sides by intense polyphase veining.

A chargeability section through the 2020 drill holes shows that this interval is in the center of a fingerlike projection from a larger chargeable body below.

Untested domains with stronger chargeabilities lie to the NE and SW.

Ice Creek and Fall Creek Zones: Mineralized Trends and IP Targets

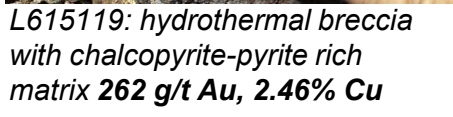


The Ice Creek and Fall Creek Zones include multiple linear trends of epithermal quartz-sulfide veins, breccias and breccia dykes. These overall NNW trends contain secondary NE-trending structures as well as stratabound zones within permeable volcanic and sedimentary units.

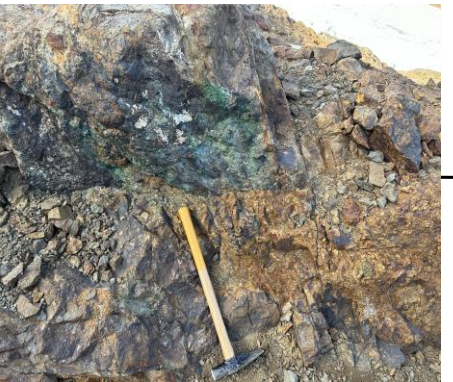
These mineralized trends are underlain by extensive chargeability highs cored by a resistivity low which are untested by drilling.



L615116: QSP altered conglomerate cut by NNW trending shear
5.8 g/t Au, 3.31% Cu



L615119: hydrothermal breccia with chalcopyrite-pyrite rich matrix
262 g/t Au, 2.46% Cu



L615115: QSP altered conglomerate
1.03 g/t Au, 1.28% Cu



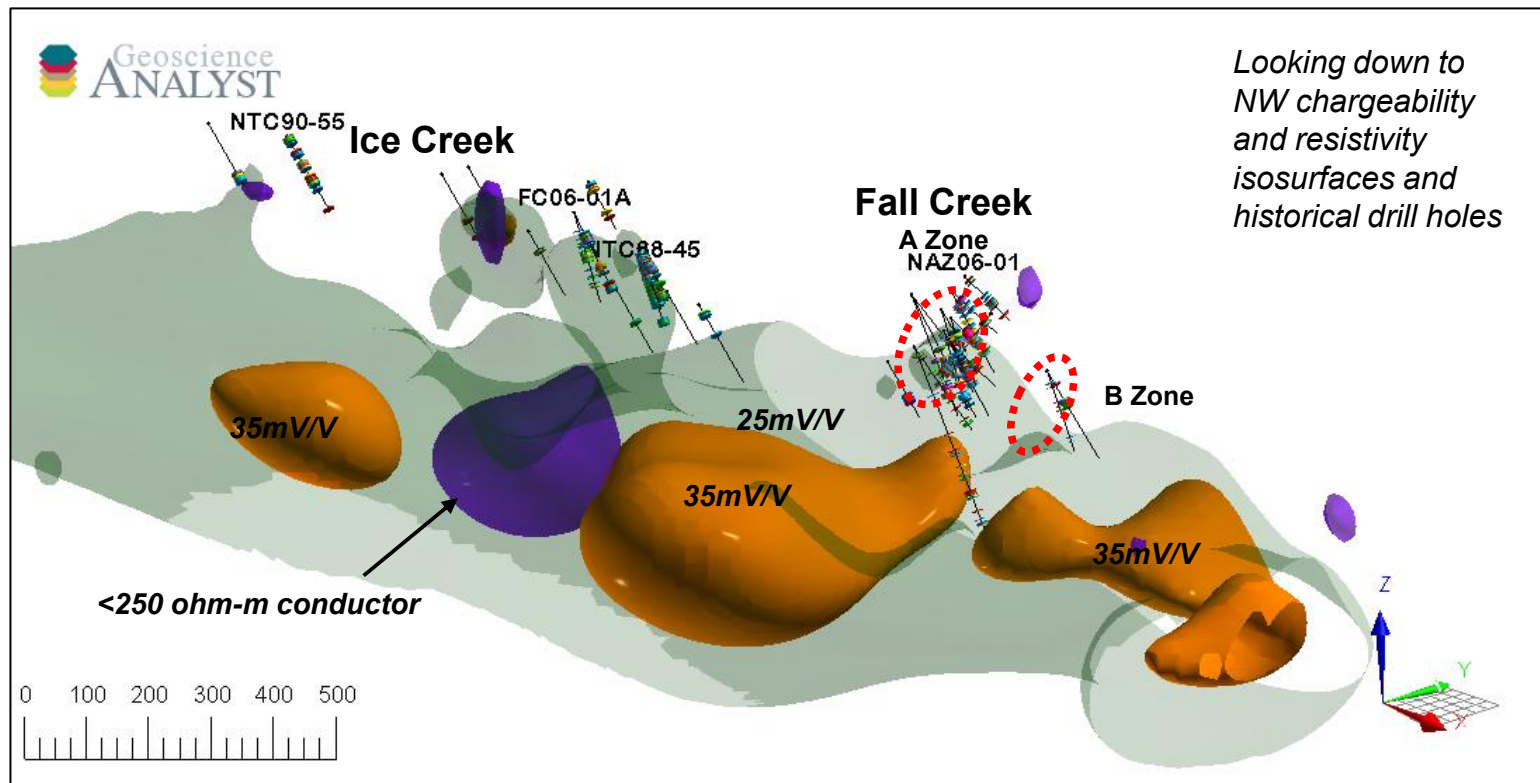
Ice Creek and Fall Creek Zones – Untested IP Targets

Historical drilling at Ice Creek and Fall Creek was too shallow to test the underlying geophysical targets.

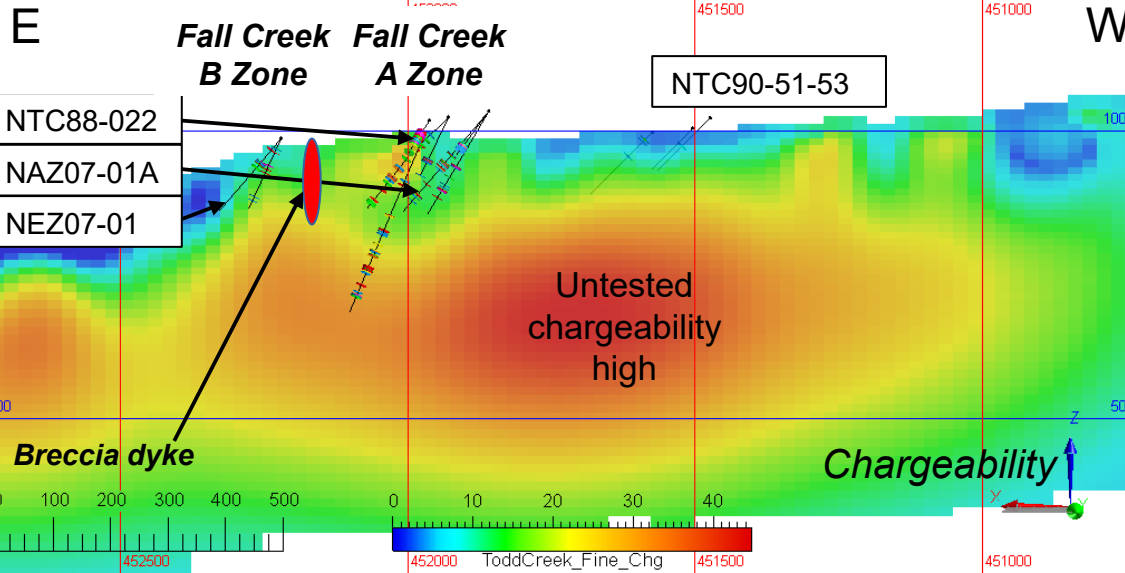
The >25 mV/V chargeability anomaly is over 2 km long and up to 1.5 km wide and open to the north. The 35 mV/V anomalies flank a strong conductor (resistivities <250 ohm-m).

Historical intercepts (not true widths) include:

- **3.47 g/t Au, 0.73% Cu / 31.85m (88-22, A Zone)**
- **0.60 g/t Au, 0.25% Cu / 15.48m (NEZ07-01, B Zone)**
- **1.78 g/t Au, 0.55% Cu / 20.95m (88-47, Ice Creek)**
- **0.42 g/t Au, 0.10% Cu / 26.82m (FC06-01A, Ice Creek)**
- **1.79 g/t Au, 0.17% Cu / 6.8m (88-45, Ice Creek)**
- **1.36 g/t Au / 19.1m (90-55, Ice Creek)**



Fall Creek: Epithermal Au-Cu Veins and a Buried Porphyry?



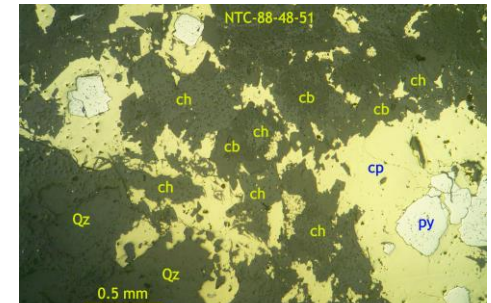
View looking south at Fall Creek A and B Zones and location of breccia dyke

Breccia dyke between Fall Creek A and B zones. Contains quartz, felsic volcanic, shallow intrusive and altered porphyry volcanic clasts. L615143: **1.15 Au, 0.76% Cu, 80 ppm Mo**



Historical drilling in the Fall Creek Zone tested shallow high grade epithermal Cu-Au lodes similar to South Zone.

Prospecting in 2023 between the Fall Creek A and B Zones discovered a well mineralized polymictic breccia dyke with clasts that may have been derived from a buried porphyry.

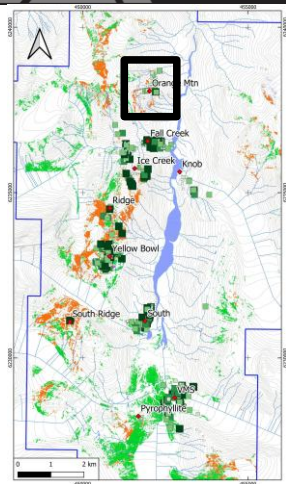


NTC88-48 (51m): Breccia with quartz vein clasts in chalcopyrite-pyrite-chlorite-carbonate matrix



Fall Creek quartz-hematite-chalcopyrite breccia

Orange Mountain: Porphyry-Style Veins



Banded qtz-mt/ht-cb-chl±cp veins

Orange Mountain is the northernmost gossanous zone in the Todd Creek corridor which has been tested by drilling (just two holes from one setup).

AM07-01 and 01A intersected variably altered and mineralized volcanics with up to 0.59 g/t Au, 30.3 g/t Ag, 0.47% Cu, 92 ppm Mo, 593 ppm Pb, 3410 ppm Zn, 1060 ppm As and 82 ppm Sb over assay intervals of 1-1.5m.

Intervals with banded quartz-magnetite/hematite-chalcopyrite veins, and sulfide stockworks with QSP alteration resemble typical porphyry vein styles.



Sulfide stockwork, QSP alteration 0.14% Cu, 0.23% Zn

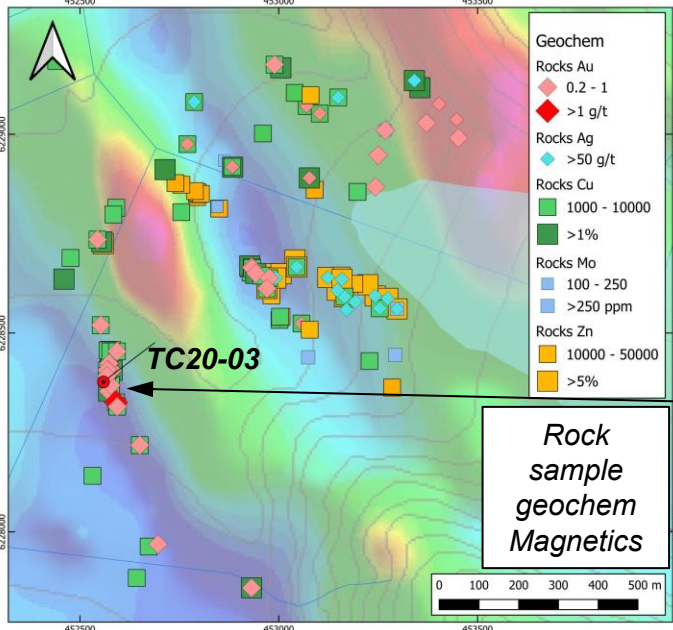
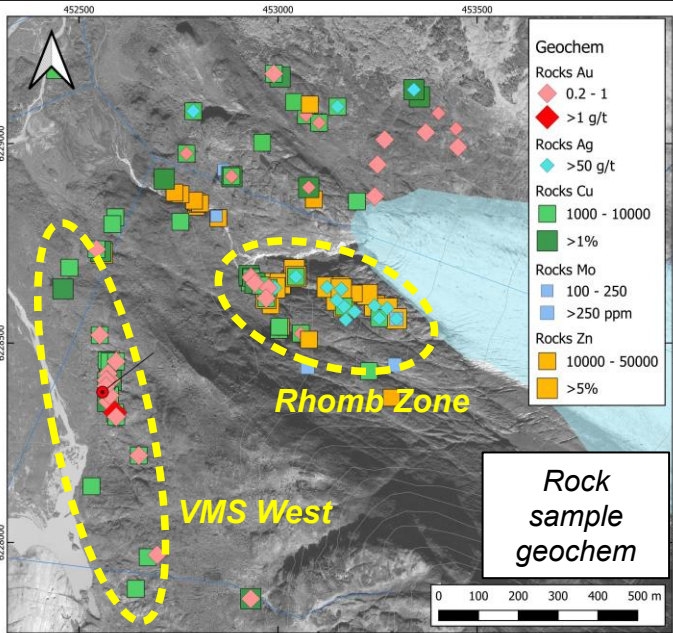


Sulfide veins with sericite haloes



Drill hole photos of NQ core, diameter 47.6 mm

VMS Zone: An Underexplored Cu-Zn-Pb-Au-Ag VMS System

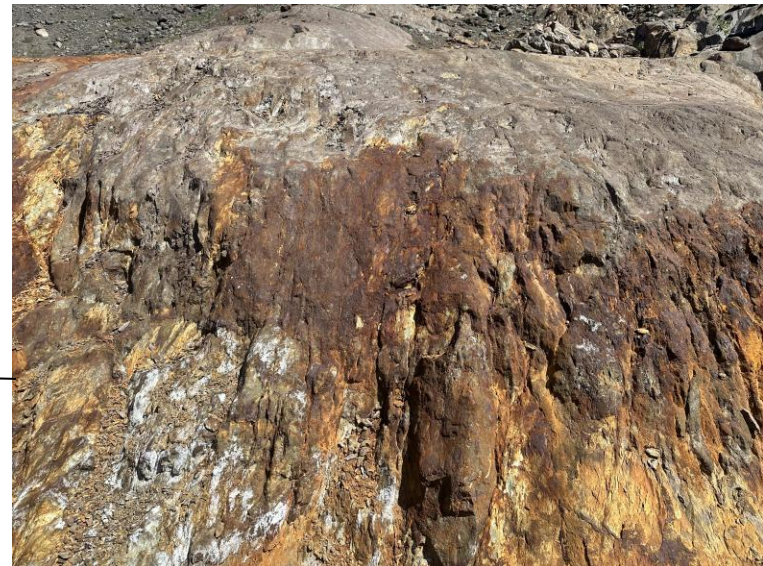


Volcanogenic Massive Sulfide (VMS) mineralization was discovered in 2008 at the toe of a receding glacier 2.5 km SE of the South Zone.

Additional massive sulfide exposures discovered in 2019 extended the zone further to the west; sulfide veins and replacements as well as bedded massive sulfide boulders has been documented over a 1 x 1.2 km area.

In 2024, the Rhomb Zone was mapped in the core of the VMS Zone, consisting of multiple sets of intersecting 2-100 cm thick polymetallic quartz-sulfide veins. The contrast in tenor between the VMS West (Cu-Au-Bi) and Rhomb Zones (Zn-Pb-Ag-Mo) is consistent with a different style of mineralization (average element values):

	Au g/t	Ag g/t	Cu%	Pb%	Zn%	As ppm	Bi ppm	Mo ppm
Rhomb	0.088	54.5	0.19	1.66	9.62	1096	0.87	35.8
VMS West	0.233	5.8	0.50	0.11	0.53	1059	3.50	8.5



VMS Zone Mineralization



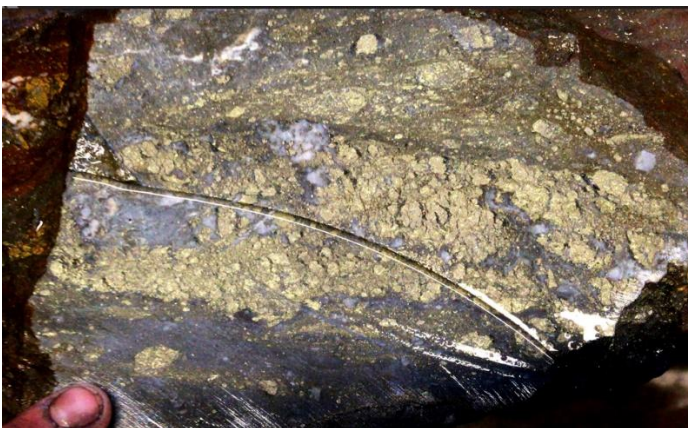
Sample 427004: **3.73% Cu, 6.46% Zn, 0.447 g/t Au, 58.2 g/t Ag**



Sample 850915: **0.824% Cu, 0.513 g/t Au**



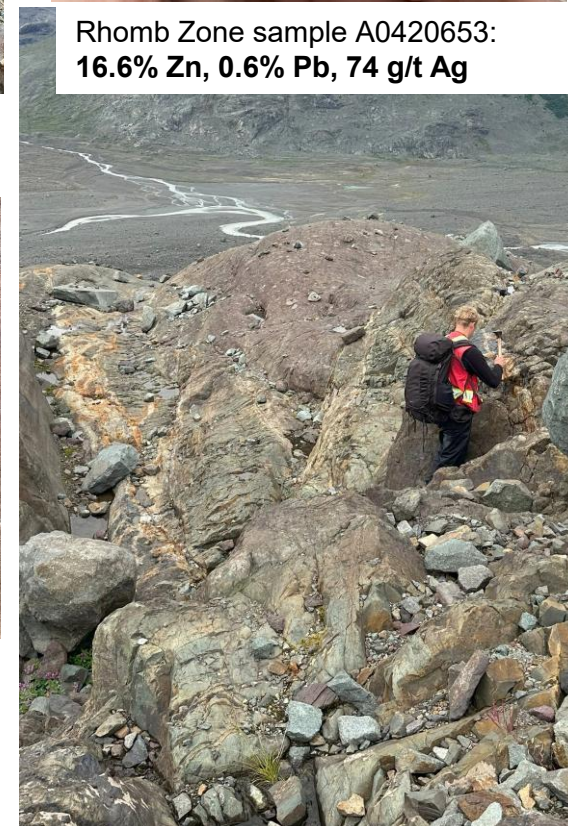
Rhomb Zone sample A0420653:
16.6% Zn, 0.6% Pb, 74 g/t Ag



Sample 851083: **1.98% Cu, 3.14% Zn, 0.38 g/t Au, 36.6 g/t Ag**

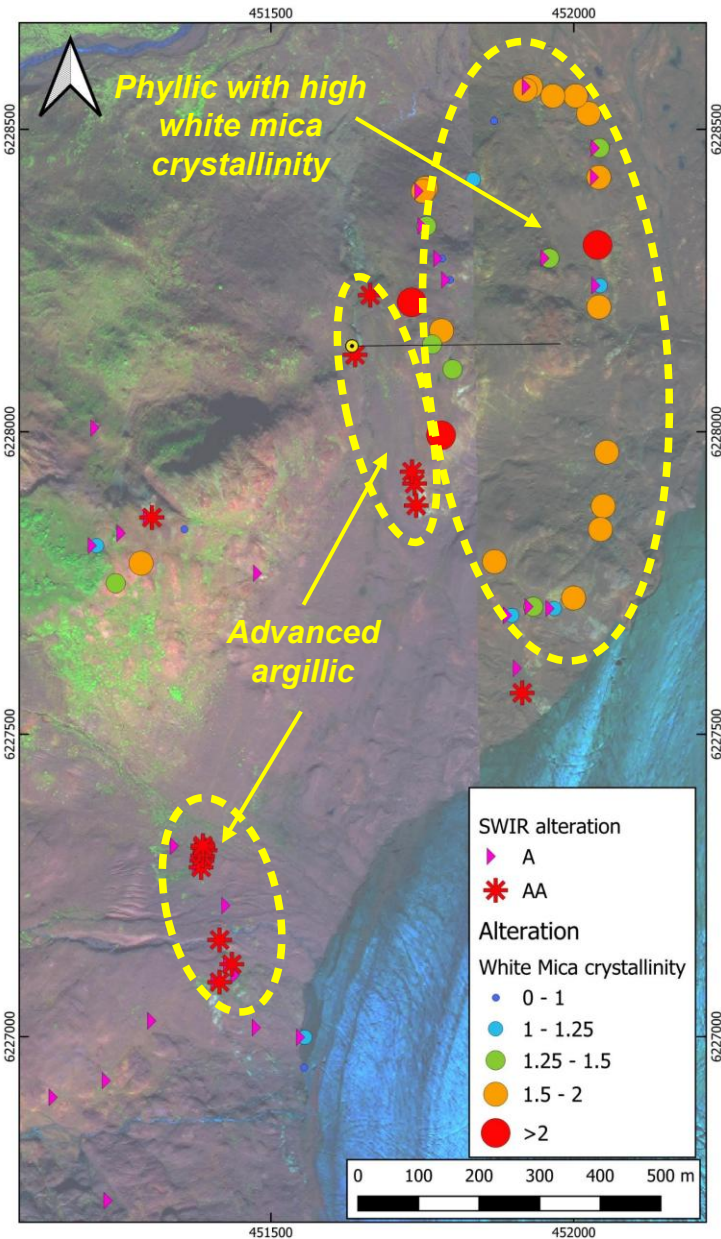


Sample 850920: **0.564% Cu, 2.05 g/t Au, 5.1 g/t Ag**

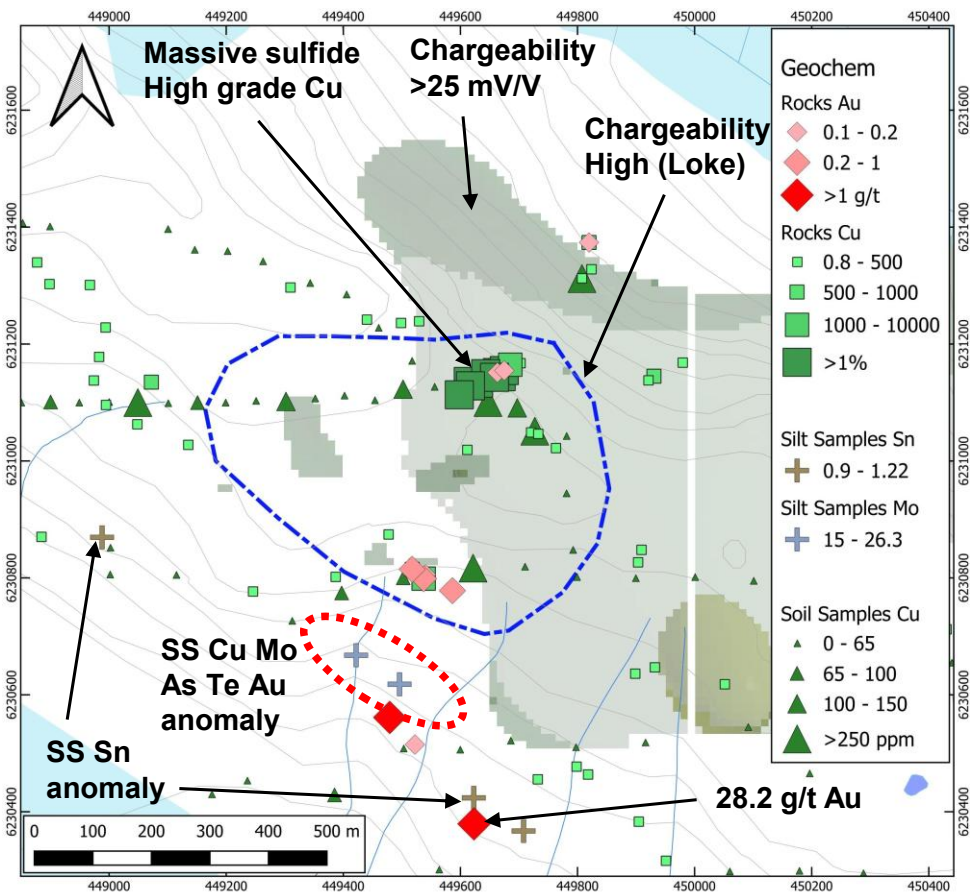


Pyrophyllite Zone: Advanced Argillic alteration

Located 3 km south of South Zone, Pyrophyllite Zone contains zones of pervasive advanced argillic alteration with sooty pyrite and quartz-pyrite veins and may represent the upper expression of a porphyry system.



Lorenzo Zone – Newly Discovered Massive Sulfide Target



Lorenzo Zone showing location of massive sulfides, chargeability highs and anomalous Cu and Au in rocks and soils

The Lorenzo Zone is a newly discovered (in 2023) massive sulfide target area, with outcropping massive sulfides over 100m in a highly prospective sedimentary and volcanic unit with significant QSP and chlorite alteration. Rock samples in the massive sulfide zone assay up to 8.64% Cu while Au values up to 28.2 g/t have been obtained on the south side of the ridge.

Soil samples delineate an 800 m wide central zone of anomalous Cu (to 666 ppm) flanked by a 2 km wide zone of anomalous Zn (to 834 ppm). The anomalous Cu zone is coincident with a chargeability high (Loke inversion) that encompasses the outcropping massive sulfides. A broad chargeability high (UBC inversion) overlaps this anomaly and extends to the east.

Stream sediments south of the anomaly include anomalous Cu (to 109 ppm), Mo (to 26 ppm), As (to 159 ppm), Te (to 0.11 ppm) and Au (to 47 ppb) flanked by anomalous Sn and Zn.

The Lorenzo Zone is untested by drilling.

Lorenzo Zone – Alteration and Mineralization



Well bedded siliceous mudstones with pyrite laminae



A0420580: 28.2 g/t Au, 51 ppm Mo *A0420662: brecciated mudstone+sulfides 2.87% Cu*



A0420664: 1.78% Cu, 0.11 g/t Au



Massive sulfide lens in siliceous sedimentary rock

A0420671: 4.48% Cu

A0420669: 8.79% Cu



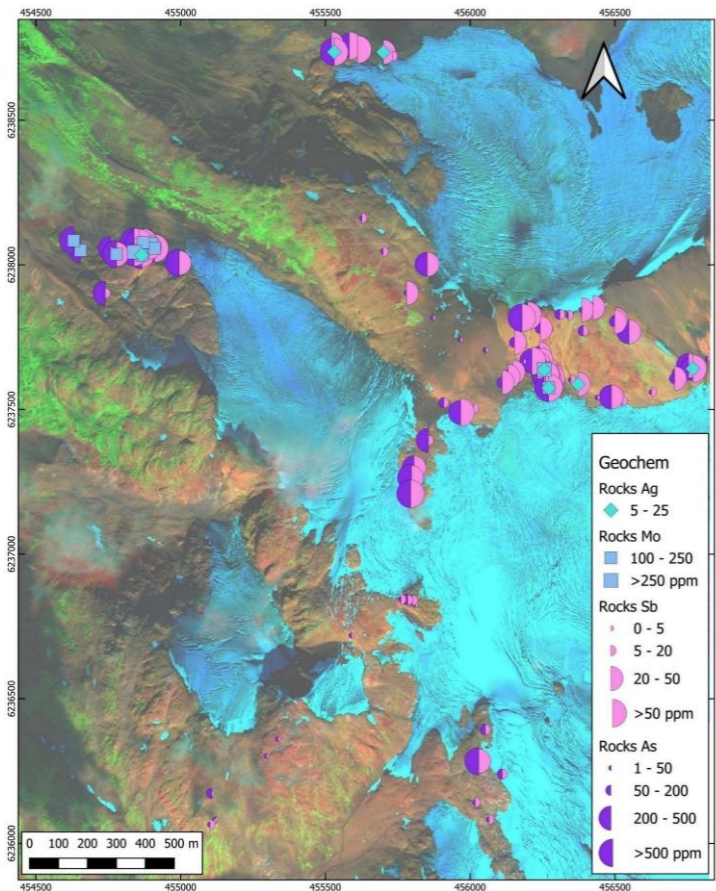
Smokin Zone – Newly Discovered VMS Target

In 2018, ArcWest discovered a new zone of possible shallow VMS mineralization in upper Hazelton Group 3-4 km east of Orange Mountain; the zone was expanded with the discovery of outcropping massive sulfides in 2024.

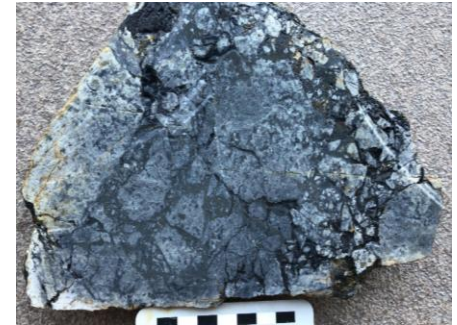
Mineralization is associated with altered rhyolite breccia and calcareous mudstone.

Abundant sooty pyrite with chalcedonic silica matrix-fill and veinlets, minor carbonaceous fragments with anomalous As, Sb, Ag, Mo, Zn and Mn values.

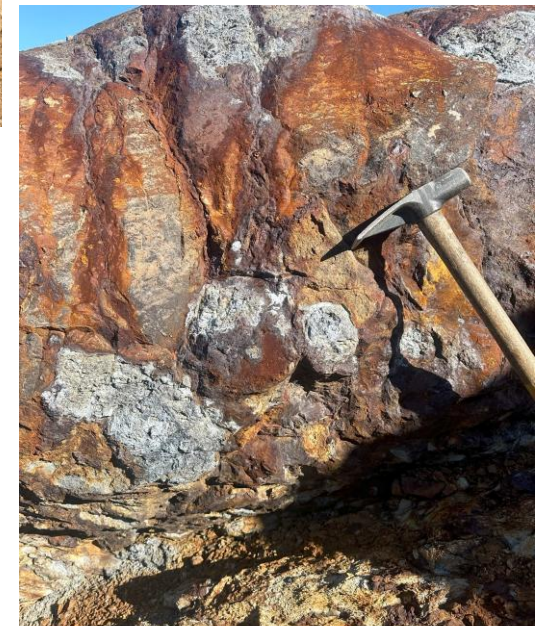
Potential Eskay Creek analogue.



Smokin Zone widespread gossans with anomalous As, Sb, Ag, Mo



Bivalve fossil



Outcropping massive sulfides

Todd Creek: One of the Largest Underexplored Copper-Gold Systems in British Columbia's Golden Triangle

Summary

- ✓ ArcWest is advancing its 100% owned Todd Creek project with funding from mining giant Freeport-McMoRan
- ✓ 13 by 3-5 km corridor of underexplored mineral showings with an extensive alteration footprint
- ✓ New 3D IP survey has delineated untested anomalies associated with known mineralization
- ✓ Underlain by similar geology and large scale structural elements as other major mineral systems in the area
- ✓ Strong copper – gold grades in rocks at surface
- ✓ Widespread evidence for buried porphyry system driving higher level epithermal mineralization at surface
- ✓ 30 km from shipping port (Stewart), 5 km from Brucejack mine road
- ✓ Permitted for drilling, camp and geophysics